



KUMPOO Brand Conference & 2025 New Product Launch

NEW PRODUCT ORDERING MEETING CATALOG

— STYLE KUMPOO —

TAKE THE CHALLENGE

This is more than just the slogan of Kumpoo, it is also the essence of brand culture.
With full confidence and passion, Kumpoo people will create a century-old enterprise and
a long-lasting brand with rigorous and pragmatic development concept.

With persistent and innovative spirit of striving, with the business purpose of integrity services,
we will depict the brilliant take-off tomorrow for Kumpoo!



CONTENETS





RACKETS SERIES

08-31



SHOES SERIES

34-45



CLOTHING SERIES

48-79



BAGS SERIES

82-91



SHUTTLECOCKS SERIES

94-95



TENNIS RACKETS SERIES

98-101



PICKLEBALL SERIES

104-107



ACCESSORIES SERIES

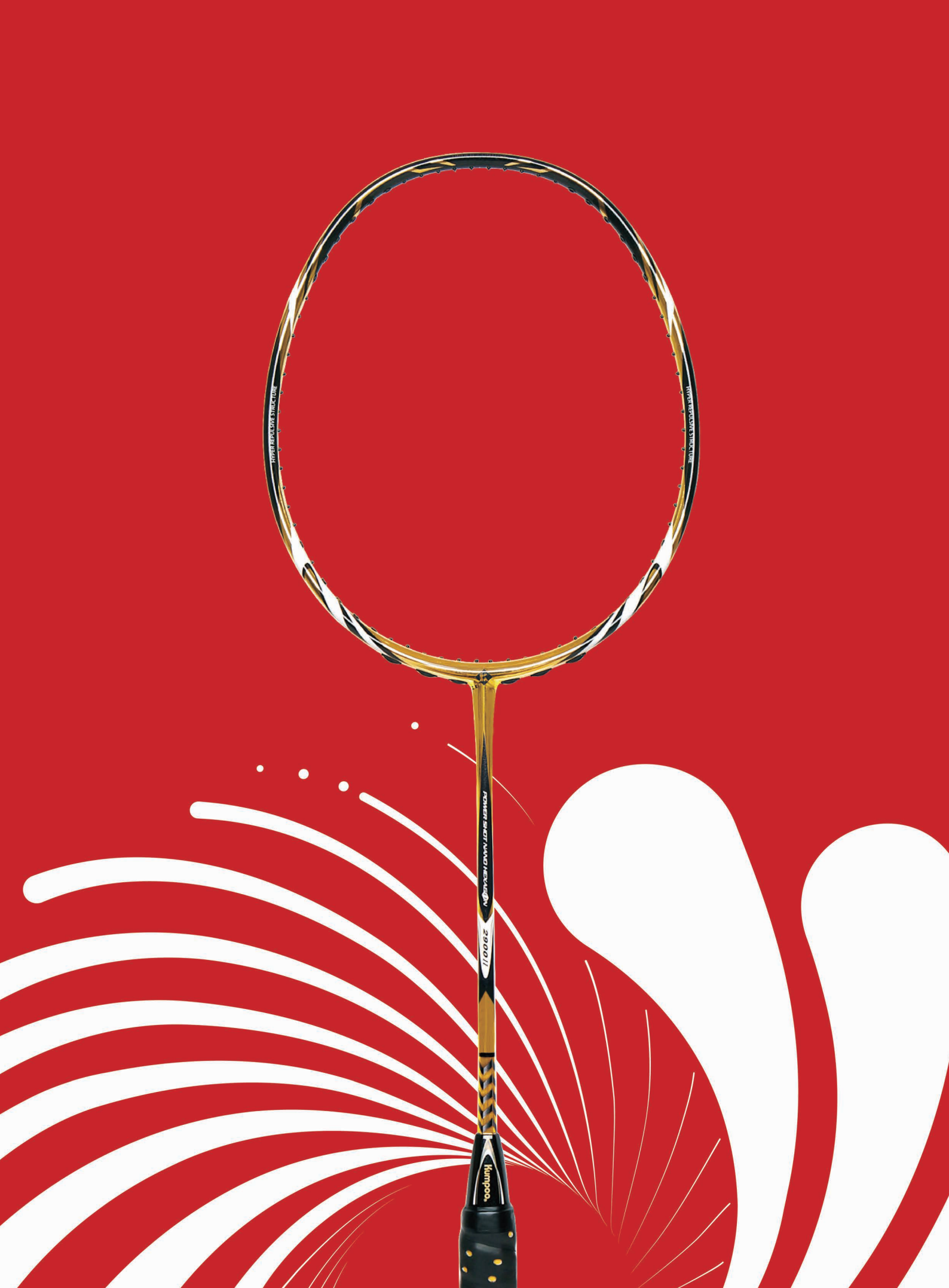
110-138

RACKETS SERIES



Kumpoo®







HEXAGON SHAFT SERIES

Patent No: ZL200820201080.7

2300-DAREN II

RECOMMENDED **NEW**

Color:	Blue
Stiffness:	8.0±0.2mm
Material:	High modulus carbon fiber
Weight:	4U(82±2g)
Balance:	295±5mm
Length:	675mm
Tension:	≤35LBS
Grip:	G5(2#)

Bag:



Arrival time: February 2025



HEXAGON SHAFT SERIES

Patent No: ZL200820201080.7

2900II GOLD

RECOMMENDED

Color:	Gold
Stiffness:	8.0±0.2mm
Material:	High modulus carbon fiber
Weight:	4U(84±1g)
Balance:	295±3mm
Length:	675mm
Tension:	≤35LBS
Grip:	G5(2#)

Bag:



Arrival time: April 2025



PATENTED SHAFT SERIES

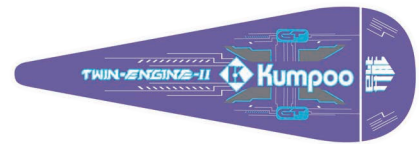
Patent No: ZL202320834705.8

TWIN-ENGINE II

RECOMMENDED **NEW**

- Color: Purple
- Stiffness: $8.3 \pm 0.2\text{mm}$
- Material: High modulus carbon fiber + Thermal foaming
- Weight: 4U($82 \pm 2\text{g}$)
- Balance: $305 \pm 3\text{mm}$
- Length: 675mm
- Tension: $\leq 32\text{LBS}$
- Grip: G5(2#)

Bag:



Arrival time: to be confirmed



EQUIPMENT FOR TIAN HOU WEI
Special Equipment Series+Graphene

HOUYI III

RECOMMENDED **NEW**

- Color: Gold
- Stiffness: $8.3 \pm 0.1\text{mm}$
- Material: High modulus carbon fiber + Graphene
- Weight: 4U($82 \pm 2\text{g}$)
- Balance: 295-300mm
- Length: 675mm
- Tension: $\leq 35\text{LBS}$
- Grip: G5(2#)

Bag:



Arrival time: May 2025



SUPER FINE SHAFT SERIES

ASURA II

RECOMMENDED NEW

Color: Red
 Stiffness: 8.3 ± 0.2 mm
 Material: High modulus carbon fiber + NANO + Thermal foaming
 Weight: 4U(82 ± 2 g)
 Balance: 305 ± 3 mm
 Length: 675mm
 Tension: ≤ 32 LBS
 Grip: G5(2#)

Bag:



Arrival time: to be confirmed

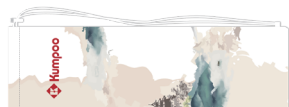


CULTURAL SERIES

YANGZHOU

NEW

Color: Green
 Stiffness: 8.5 ± 0.2 mm
 Material: High modulus carbon fiber
 Weight: 4U(82 ± 2 g)
 Balance: 300 ± 5 mm
 Length: 675mm
 Tension: ≤ 30 LBS
 Grip: G5(2#)
 Flannelette bag:



Arrival time: February 2025

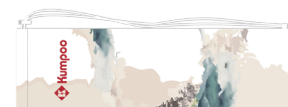


CULTURAL SERIES

JINGZHOU

NEW

Color: Light green
 Stiffness: 8.5 ± 0.2 mm
 Material: High modulus carbon fiber
 Weight: 4U(82 ± 2 g)
 Balance: 300 ± 5 mm
 Length: 675mm
 Tension: ≤ 30 LBS
 Grip: G5(2#)
 Flannelette bag:



Arrival time: February 2025



CULTURAL SERIES

PINES II

RECOMMENDED **NEW**

Color: White/blue; White/pink
Stiffness: 8.2±0.2mm
Material: High modulus carbon fiber
Weight: 4U(82±2g)
Balance: 300±3mm
Length: 675mm
Tension: ≤32LBS
Grip: G5(2#)
Flannelette bag:



Arrival time: February 2025



QINGFENG SERIES

QF-10

NEW

Color: White/purple; White/blue; White/green
Stiffness: 8.5±0.5mm
Material: Carbon graphite
Weight: 5U(77±2g)
Balance: 302±5mm
Length: 675mm
Tension: ≤30LBS
Grip: G5(2#)
Flannelette bag:



Arrival time: March 2025



QINGFENG SERIES

QF-11

NEW

Color: Pink; Blue

Stiffness: 8.5±0.5mm

Material: Carbon graphite

Weight: 4U(82±2g)

Balance: 295±5mm

Length: 675mm

Tension: ≤28LBS

Grip: G5(2#)

Flannelette bag:



Arrival time: March 2025



QINGFENG SERIES

QF-12

NEW

Color: Silver/green ; Silver/pink

Stiffness: 8.5±0.5mm

Material: Carbon graphite

Weight: 4U(82±2g)

Balance: 295±5mm

Length: 675mm

Tension: ≤28LBS

Grip: G5(2#)

Flannelette bag:



Arrival time: March 2025



QINGFENG SERIES

QF-13

NEW

Color: Pink; Blue

Stiffness: 8.5±0.5mm

Material: Carbon graphite

Weight: 4U(82±2g)

Balance: 295±5mm

Length: 675mm

Tension: ≤28LBS

Grip: G5(2#)

Flannelette bag:



Arrival time: March 2025



Lorie 10

RECOMMENDED

NEW

Color: Blue; Pink

Stiffness: 8.5±0.5mm

Material: Carbon graphite

Weight: 5U(77±2g)

Balance: 302±5mm

Length: 675mm

Tension: ≤30LBS

Grip: G5(2#)

Flannelette bag:



Arrival time: March 2025



DREAM

RECOMMENDED NEW

Color: White; Pink

Stiffness: $8.5 \pm 0.5\text{mm}$

Material: Carbon graphite

Weight: 5U($77 \pm 2\text{g}$)

Balance: $302 \pm 5\text{mm}$

Length: 675mm

Tension: $\leq 30\text{LBS}$

Grip: G6(1#)

Flannelette bag:



Arrival time: March 2025



CUTE PET SERIES

MC66

NEW

Color: Blue

Stiffness: $8.5 \pm 0.5\text{mm}$

Material: Carbon graphite

Weight: 4U($82 \pm 2\text{g}$)

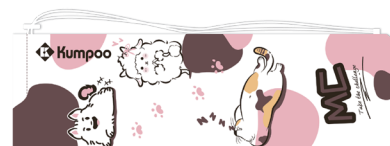
Balance: $295 \pm 5\text{mm}$

Length: 675mm

Tension: $\leq 28\text{LBS}$

Grip: G5(2#)

Flannelette bag:



Arrival time: April 2025

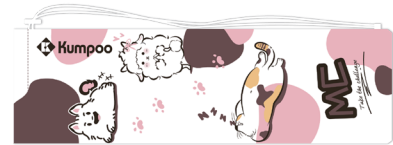


CUTE PET SERIES

MC77

NEW

- Color: Green
- Stiffness: 8.5 ± 0.5 mm
- Material: Carbon graphite
- Weight: 4U(82 ± 2 g)
- Balance: 295 ± 5 mm
- Length: 675mm
- Tension: ≤ 28 LBS
- Grip: G5(2#)
- Flannelette bag:



Arrival time: April 2025

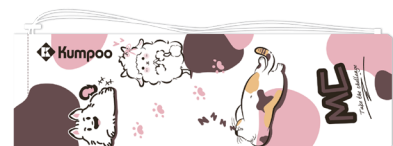


CUTE PET SERIES

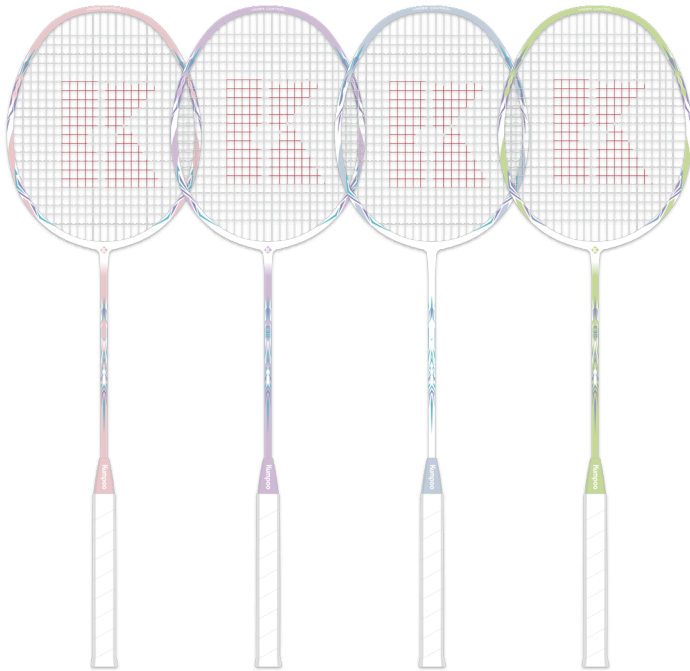
MC88

NEW

- Color: Brown
- Stiffness: 8.5 ± 0.5 mm
- Material: Carbon graphite
- Weight: 4U(82 ± 2 g)
- Balance: 295 ± 5 mm
- Length: 675mm
- Tension: ≤ 28 LBS
- Grip: G5(2#)
- Flannelette bag:



Arrival time: April 2025



CARBON COMPOSITE SERIES

E30

NEW

- Color: Light purple; Light green; Light blue; Light pink
- Stiffness: 9.5 ± 0.5 mm
- Material: 6061 Aluminum
- Weight: 3U(87 ± 2 g)
- Length: 670mm
- Tension: ≤ 24 LBS
- Grip: G5(2#)
- Bag:



Arrival time: April 2025



POPING CANDY

CHILDREN RACKET

NEW

- Color: Blue; Yellow
- Stiffness: 9.5 ± 0.5 mm
- Material: Carbon graphite+Resin
- Weight: 6U(72 ± 2 g)
- Length: 580mm
- Tension: ≤ 24 LBS
- Grip: G6(1#)
- Bag:



Arrival time: April 2025



AK-7 II

RECOMMENDED **NEW**

Color: White
 Stiffness: $8.2 \pm 0.2\text{mm}$
 Material: High modulus carbon fiber
 Weight: 5U($77 \pm 2\text{g}$) / 4U($82 \pm 2\text{g}$)
 Balance: $302 \pm 5\text{mm}$
 Length: 675mm
 Tension: $\leq 30\text{LBS}$
 Grip: G5(2#)
 Flannelette bag:



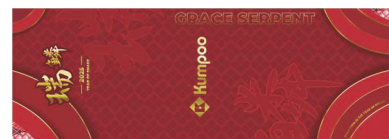
Arrival time: March 2025



CHINESE NEW YEAR RACKET FELICITY GIFT SET

NEW

Color: Purple
 Stiffness: $8.2 \pm 0.2\text{mm}$
 Material: High modulus carbon fiber
 Weight: 4U($82 \pm 2\text{g}$)
 Balance: $300 \pm 3\text{mm}$
 Length: 675mm
 Tension: $\leq 32\text{LBS}$
 Grip: G5(2#)
 Gift box:



Arrival time: November 2024



K01

NEW

Color: Purple; Blue; Pink
 Stiffness: $8.5 \pm 0.5\text{mm}$
 Material: High modulus carbon fiber
 Weight: 5U($77 \pm 2\text{g}$)
 Balance: $302 \pm 5\text{mm}$
 Length: 675mm
 Tension: $\leq 32\text{LBS}$
 Grip: G6(1#)
 Flannelette bag:



Arrival time: August 20th 2024



B.DUCK (CUTE)

RECOMMENDED

NEW

Color: Yellow; White
 Stiffness: $8.5 \pm 0.2\text{mm}$
 Material: T700 Carbon graphite
 Weight: 4U($82 \pm 2\text{g}$)
 Balance: $295 \pm 5\text{mm}$
 Length: 675mm
 Tension: $\leq 32\text{LBS}$
 Grip: G5(2#)
 Flannelette bag:



Arrival time: September 2024



Patent No: ZL202220048813.8



B.DUCK (COOL)

RECOMMENDED NEW

Color: White; Black

Stiffness: $8.3 \pm 0.2\text{mm}$

Material: High modulus carbon fiber+Thermal foaming

Weight: 4U($82 \pm 2\text{g}$)

Balance: $305 \pm 5\text{mm}$

Length: 675mm

Tension: $\leq 32\text{LBS}$

Grip: G5(2#)

Gift box:



Arrival time: September 2024



HEXAGON SHAFT SERIES

Patent No: ZL200820201080.7

2300-DAREN

Color:	Blue
Stiffness:	8.0±0.2mm
Material:	High modulus carbon fiber+NANO
Weight:	4U(82±2g)
Balance:	290±3mm
Length:	675mm
Tension:	28-35LBS
Grip:	G5(2#)
Bag:	



PATENTED SHAFT SERIES

Patent No: ZL202320834705.8

TWIN-ENGINE

Color:	White; Black
Stiffness:	8.3±0.2mm
Material:	T700 + M30 High modulus carbon fiber + Thermal foaming
Weight:	4U(82±2g)
Balance:	295±5mm
Length:	675mm
Tension:	≤32LBS
Grip:	G5(2#)
Bag:	





EQUIPMENT FOR TIAN HOU WEI

Special Equipment Series

HOUYI II

Color:	White/blue
Stiffness:	8.3±0.1mm
Material:	High modulus carbon fiber+Graphene+46T titanium wire shaft
Weight:	4U(82±2g)
Balance:	295-300mm
Length:	675mm
Tension:	≤35LBS
Grip:	G5(2#)
Bag:	



SUPER FINE SHAFT SERIES

ASURA

Color:	White/Red; White/Blue
Stiffness:	8.3±0.2mm
Material:	50T Super high modulus carbon graphite + Thermal foaming
Weight:	4U(82±2g)
Balance:	305±3mm
Length:	675mm
Tension:	≤32LBS
Grip:	G5(2#)
Bag:	





PATENTED PLIERS FRONT CAP SERIES

Patent No: ZL202220048813.8

MOUNTAINS AND RIVERS

Color: White/black

Stiffness: 8.2±0.1mm

Material: High modulus carbon fiber+Thermal foaming

Weight: 3U/87±2g 4U/82±2g

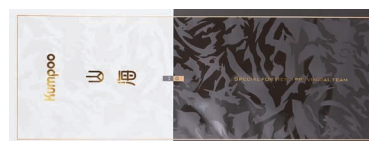
Balance: 3U/308±3mm 4U/305±3mm

Length: 675mm

Tension: ≤32LBS

Grip: G5(2#)

Gift box:



PATENTED PLIERS FRONT CAP SERIES

Patent No: ZL202220048813.8

ALKAID

Color: White/purple

Stiffness: 8.2±0.2mm

Material: T700 + M30 High modulus carbon fiber + Thermal foaming

Weight: 4U(82±2g)

Balance: 302±3mm

Length: 675mm

Tension: ≤32LBS

Grip: G5(2#)

Bag:





EQUIPMENT FOR HONG WEI
Special Equipment Series

KEVLARMOR III

Color:	Black/gold
Stiffness:	8.7±0.2mm
Material:	40T high modulus carbon fiber + Kevlar
Weight:	4U(82±2g)
Balance:	290±3mm
Length:	675mm
Tension:	≤35LBS
Grip:	G5(2#)
Bag:	



CULTURAL SERIES

WINTERSWEET

Color:	White / black
Stiffness:	8.5±0.2mm
Material:	High modulus carbon fiber
Weight:	4U(82±2g)
Balance:	293±3mm
Length:	675mm
Tension:	≤30LBS
Grip:	G5(2#)

Flannelette bag:





CULTURAL SERIES

LUSH MOUNTAIN

Color: White/green;White

Stiffness: 8.5 ± 0.3 mm

Material: High modulus carbon fiber

Weight: 4U(82 ± 2 g)

Balance: 298 ± 5 mm

Length: 675mm

Tension: ≤ 30 LBS

Grip: G6(1#)

Flannelette bag:



CULTURAL SERIES

SOUTH

Color: White

Stiffness: 8.5 ± 0.2 mm

Material: High modulus carbon fiber

Weight: 4U(82 ± 2 g)

Balance: 295 ± 5 mm

Length: 675mm

Tension: ≤ 30 LBS

Grip: G5(2#)

Flannelette bag:





VELURIYAM

Color: White/pink; White/blue; White/gold

Stiffness: 8.5 ± 0.5 mm

Material: Carbon graphite

Weight: 5U(77 ± 2 g)

Balance: 302 ± 5 mm

Length: 675mm

Tension: ≤ 30 LBS

Grip: G6(1#)

Flannelette bag:



WHITE DEW

Color: Pink

Stiffness: 9.0 ± 0.3 mm

Material: Carbon graphite

Weight: 5U(77 ± 2 g)

Balance: 295 ± 5 mm

Length: 675mm

Tension: ≤ 30 LBS

Grip: G6(1#)

Flannelette bag:





PEACH BLOSSOM

Color: Pink

Stiffness: 9.0 ± 0.3 mm

Material: Carbon graphite

Weight: 5U(77 ± 2 g)

Balance: 295 ± 5 mm

Length: 675mm

Tension: ≤ 30 LBS

Grip: G6(1#)

Flannelette bag:



BLUE DOME

Color: White/purple

Stiffness: 9.0 ± 0.3 mm

Material: Carbon graphite

Weight: 5U(77 ± 2 g)

Balance: 300 ± 5 mm

Length: 675mm

Tension: ≤ 30 LBS

Grip: G6(1#)

Flannelette bag:





E58LS | E57LS

Color: White/light purple; White/dark purple

Stiffness: 8.5 ± 0.5 mm

Material: Carbon graphite

Weight: 4U(82 ± 2 g)

Balance: 295 ± 5 mm

Length: 675mm

Tension: ≤ 28 LBS

Grip: G5(2#)

Bag:



E56LS | E55LS

Color: White/light green; White/blue

Stiffness: 8.5 ± 0.5 mm

Material: Carbon graphite

Weight: 4U(82 ± 2 g)

Balance: 295 ± 5 mm

Length: 675mm

Tension: ≤ 28 LBS

Grip: G5(2#)

Bag:





E89LS | E88LS

Color: Black/yellow ; Black/blue

Stiffness: 8.7 ± 0.3 mm

Material: Carbon graphite

Weight: 4U(82 ± 2 g)

Balance: 295 ± 5 mm

Length: 675mm

Tension: ≤ 28 LBS

Grip: G5(2#)

Bag:



520A(S)

Color: White/red; White/yellow

Stiffness: 9.0 ± 0.5 mm

Material: Carbon graphite + Resin

Weight: 4U(82 ± 2 g)

Balance: -

Length: 675mm

Tension: ≤ 24 LBS

Grip: G5(2#)

Flannelette bag:





520B(S)

Color: Black/purple; Black/blue

Stiffness: 9.0 ± 0.5 mm

Material: Carbon graphite + Resin

Weight: 4U(82 ± 2 g)

Balance: -

Length: 675mm

Tension: ≤ 24 LBS

Grip: G5(2#)

Flannelette bag:



RIDE THE WIND S 4U

Color: White; Blue; Gray

Stiffness: 8.5 ± 0.2 mm

Material: High carbon graphite

Weight: 4U(82 ± 2 g)

Balance: 295 ± 5 mm

Length: 675mm

Tension: ≤ 30 LBS

Grip: G5(2#)

Bag:





RIDE THE WIND S 6U

Color: Green
Stiffness: $9.0 \pm 0.3\text{mm}$
Material: High carbon graphite+Kevlar
Weight: 6U($72 \pm 2\text{g}$)
Balance: $305 \pm 5\text{mm}$
Length: 675mm
Tension: $\leq 30\text{LBS}$
Grip: G6(1#)
Bag:



FLIP

Color: White
Stiffness: $8.5 \pm 0.3\text{mm}$
Material: T700 High carbon graphite
Weight: 4U($82 \pm 2\text{g}$)
Balance: $298 \pm 3\text{mm}$
Length: 675mm
Tension: $\leq 32\text{LBS}$
Grip: G5(2#)
Bag:





K520 PRO

Color: Light pink; Light blue; White; Black

Stiffness: 8.5 ± 0.5 mm

Material: Carbon graphite

Weight: 4U(82 ± 2 g)

Balance: 290 ± 5 mm

Length: 675mm

Tension: ≤ 28 LBS

Grip: G5(2#)

Flannelette bag:



SHOES SERIES





A-Black/gold



B-White/green/blue



C-Black/white

SUPERCritical TECHNOLOGY

KH-G828

RECOMMENDED **NEW**

Upper:	Microfiber+TPU+Mesh
Insole and lining:	Fabric+EVA
Sole:	Natural rubber+TPU+Carbon plate+ACF
Arrival time:	March 2025

Remark: with professional shoes bag



A-White/gray



B-White/blue

DUO POWER

KH-G827

RECOMMENDED **NEW**

Upper:	KPU+ Mesh+ PU
Insole and lining:	Fabric+EVA
Sole:	Natural rubber+ MD+ TPU+ ACF
Arrival time:	to be confirmed

Remark: with professional shoes bag



A-White/blue



B-Gray



C-White/black



D-Black

DUO POWER

KH-G826 ST

RECOMMENDED **NEW**

Upper:	Flyknit+Mesh+PU+TPU
Insole and lining:	Fabric+EVA
Sole:	Natural rubber +MD+ TPU+ ACF
Arrival time:	May 2025

Remark: with professional shoes bag



White/yellow/blue

DUO POWER

KH-G826S B.DUCK

RECOMMENDED

NEW

Upper: TPU+Mesh+Flyknit+Fitgo

Insole and lining: Fabric+EVA

Sole: Natural rubber+MD+TPU+ACF

Arrival time: September 2024

Remark: with professional shoes bag



A-White/blue



B-White/purple



C-Black/red

DUO POWER

KH-G826

RECOMMENDED

NEW

Upper: TPU+Mesh+Flyknit

Insole and lining: Fabric+EVA

Sole: Natural rubber +MD+ TPU+ ACF

Arrival time: to be confirmed

Remark: with professional shoes bag



A-White/blue



B-White/purple



C-Orange/red



D-White/light pink/purple

UHMWPE+LeoBoom

KH-G712

RECOMMENDED

NEW

Upper: UHMWPE+TPU+ PU

Insole and lining: Fabric+EVA

Sole: Natural rubber+LeoBoom mid-sole+ TPU+Carbon plate

Arrival time: April 2025

Remark: with professional shoes bag



A-White/pink



B-White/blue

LeoBoom

KH-G711 DAREN III

NEW

Upper:	PU+TPU+Mesh
Insole and lining:	Fabric+EVA
Sole:	Natural rubber+ LeoBoom mid-sole+ TPU+ Carbon plate
Arrival time:	to be confirmed

Remark: with professional shoes bag



A-White/yellow



B-White/purple

LeoBoom

KH-D72PRO B.DUCK

RECOMMENDED

NEW

Upper:	TPU+PU+Mesh
Insole and lining:	Fabric+EVA
Sole:	Natural rubber+ LeoBoom mid-sole+ TPU+ Carbon plate
Arrival time:	September 2024

Remark: with professional shoes bag



White/blue

LeoBoom

KH-D72PRO L.Y

RECOMMENDED

NEW

Upper:	TPU+PU+Mesh
Insole and lining:	Fabric+EVA
Sole:	Natural rubber+ LeoBoom mid-sole+ TPU+ Carbon plate
Arrival time:	August 20th 2024

Remark: with professional shoes bag



A-White/black



B-White/blue/purple

FASHION SERIES

KH-D526

NEW

Upper:	PU+TPU+Mesh
Insole and lining:	Fabric+EVA
Sole:	Natural rubber+MD
Arrival time:	February 2025

Remark: with professional shoes bag



A-White/green/orange



B-White/purple/pink

LIGHTWEIGHT SERIES

KH-E311

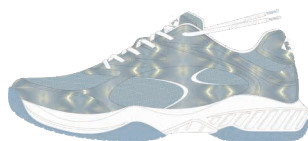
NEW

Upper:	Mesh+PU
Insole and lining:	Fabric+EVA
Sole:	Natural rubber+MD+Carbon plate
Arrival time:	February 2025

Remark: with professional shoes bag



A-White/purple



B-White/gray



C-White/blue

FASHION SERIES

KH-E307

NEW

Upper:	PU+TPU+Mesh
Insole and lining:	Fabric+EVA
Sole:	Natural rubber+MD+TPU+Carbon plate
Arrival time:	February 2025

Remark: with professional shoes bag



A-Khaki/green



B-White/gray/pink

VINTAGE SERIES

KH-E305

NEW

Upper:	PU+TPU+Mesh
Insole and lining:	Fabric+EVA
Sole:	Natural rubber+MD+Carbon plate
Arrival time:	February 2025

Remark: with professional shoes bag



A-White/blue/pink



B-Off-white/orange/green

VINTAGE SERIES

KH-E303

NEW

Upper:	Mesh+PU
Insole and lining:	Fabric+EVA
Sole:	Natural rubber+MD+Carbon plate+TPU
Arrival time:	March 2025

Remark: with professional shoes bag



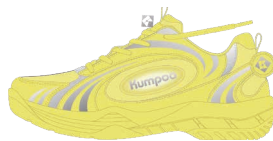
A-White/silver



B-White/black



C-White/light gray



D-Yellow/silver

JUNIOR SERIES

KH-J11

NEW

Upper:	PU+TPU+Mesh
Insole and lining:	Fabric+EVA
Sole:	Natural rubber+MD+Carbon plate
Arrival time:	to be confirmed

Remark: with professional shoes bag



A-White/green



B-White/orange



C-White/silver

KH-T515

NEW

Upper:	PU+TPU+Mesh
Insole and lining:	Fabric+EVA
Sole:	Natural rubber+MD+Carbon plate
Arrival time:	to be confirmed

Remark: with professional shoes bag



A-White/green/yellow



B-White/orange/blue

KH-T516

NEW

Upper:	UHMWPE+Mesh+TPU+PU
Insole and lining:	Fabric+EVA
Sole:	Natural rubber+MD
Arrival time:	to be confirmed

Remark: with professional shoes bag



A-White/black



B-White/purple/pink



C-White/green/purple

RUNNING SERIES

KH-X105

NEW

Upper:	Jacquard mesh+TPU
Insole and lining:	Fabric+EVA
Sole:	Natural rubber+LeoBoom mid-sole+ Carbon plate
Arrival time:	to be confirmed



A-Khaki



B-White/blue

KH-X102

NEW

Upper:	Denim+Microfiber
Insole and lining:	Fabric+EVA
Sole:	Natural rubber+MD+TPU
Arrival time:	to be confirmed



A-White/black



B-White/green

KH-X101

RECOMMENDED

NEW

Upper:	Microfiber+Mesh
Insole and lining:	Fabric+EVA
Sole:	Natural rubber+MD
Arrival time:	August 31th 2024



A-Blue



B-Pink



C-Silver/gray

KH-X101S

NEW

Upper: Denim+PU+Mesh

Insole and lining: Fabric+EVA

Sole: Natural rubber+MD

Arrival time: to be confirmed



A-White



B-Green



C-Light khaki



D-Khaki

SLIPPERS

KH-X007

NEW

Material: EVA

Sole: EVA

Arrival time: to be confirmed



B-Black



A-Yellow



C-White

CROCS B.DUCK

NEW

Material: EVA

Sole: EVA

Arrival time: September 2024



A-White/red/black



B-Black

DUO POWER
KH-G826S

Upper: TPU+Mesh+Flyknit+Fitgo

Insole and lining: Fabric+EVA

Sole: Natural rubber+MD+TPU+ACF

Note: with professional shoes bag



A-White/red/black



B-White/green



C-White/blue

DUO POWER
KH-G826

Upper: TPU+Mesh+Flyknit

Insole and lining: Fabric+EVA

Sole: Natural rubber+MD+TPU+ACF

Note: with professional shoes bag



A-Green/blue



B-White/pink



C-White/rose/purple

DUO POWER
KH-G825

Upper: Microfiber+Air leather+TPU+Mesh

Insole and lining: Fabric+EVA

Sole: Natural rubber+MD+TPU+ACF

Note: with professional shoes bag



A-Purple/green



B-White/blue



C-Light pink/blue

LeoBoom
KH-G711 II

Upper:	Microfiber+TPU+Mesh
Insole and lining:	Fabric+EVA
Sole:	Natural rubber+LeoBoom mid-sole+TPU+Carbon plate

Note: with professional shoes bag



A-Purple



B-Light pink



C-White/black

LeoBoom
KH-D72PRO

Upper:	TPU+PU+Mesh
Insole and lining:	Fabric+EVA
Sole:	Natural rubber+LeoBoom mid-sole+TPU+Carbon plate

Note: with professional shoes bag



A-White/pink



B-White/blue

KH-D510

Upper:	TPU+PU+Mesh
Insole and lining:	Fabric+EVA
Sole:	Natural rubber+MD+TPU+Carbon plate

Note: with professional shoes bag



A-White/blue



B-White/green

KH-D511

Upper: TPU+Mesh

Insole and lining: Fabric+EVA

Sole: Natural rubber+MD+TPU+Carbon plate

Note: with professional shoes bag



A-White/pink



B-White/blue

KH-E301

Upper: PU+Mesh

Insole and lining: Fabric+EVA

Sole: Natural rubber+MD+Carbon plate

Note: with professional shoes bag



White/silver

KH-E302

Upper: PU+Mesh

Insole and lining: Fabric+EVA

Sole: Natural rubber+MD+Carbon plate

Note: with professional shoes bag



A-White/light gray



B-White/blue



C-White/green

JUNIOR
KH-J08

Upper:	TPU+Mesh
Insole and lining:	Fabric+EVA
Sole:	Natural rubber+MD+Carbon plate

Note: with professional shoes bag

CLOTHING SERIES



Kumpoo®







Light blue

Tournament Apparel

NEW

K241M-1028 (MEN)

K241W-1028 (WOMEN)

Material: 90% polyester+10% spandex

Size: S/M/L/XL/2XL/3XL/4XL

Arrival time: February 2025



White

Tournament Apparel

NEW

K241M-1029 (MEN)

K241W-1029 (WOMEN)

Material: 88% polyester+12% spandex

Size: S/M/L/XL/2XL/3XL/4XL

Arrival time: February 2025



A-Light pink



B-Light purple



C-Light green

Tournament Apparel

NEW

K241M-1032 (MEN)

K241W-1032 (WOMEN)

Material: 88% polyester+12% spandex

Size: S/M/L/XL/2XL/3XL/4XL

Arrival time: February 2025



Pink

Tournament Apparel

NEW

K241M-1035 (MEN)

K241W-1035 (WOMEN)

Material: 88% polyester+12% spandex

Size: S/M/L/XL/2XL/3XL/4XL

Arrival time: February 2025



A-White

B-Black

C-Blue

Tournament Apparel

NEW

K241M-1036 (MEN)

K241W-1036 (WOMEN)

Material: 93% polyester+7% spandex

Size: S/M/L/XL/2XL/3XL/4XL

Arrival time: February 2025



A-Green

B-Pink

C-Blue

Tournament Apparel

NEW

K241M-1037 (MEN)

K241W-1037 (WOMEN)

Material: 92% polyester+8% spandex

Size: S/M/L/XL/2XL/3XL/4XL

Arrival time: February 2025



A-Black



B-White

Shorts

NEW

K241U-2012 (UNISEX)

Material: 93% polyester+7% spandex

Size: S/M/L/XL/2XL/3XL/4XL

Arrival time: February 2025



A-Green

B-Black

C-Purple

D-White

E-Pink

Shorts

NEW

K241M-2006 (MEN)

K241W-2006 (WOMEN)

Material: 91% polyester+9% spandex

Size: S/M/L/XL/2XL/3XL/4XL

Arrival time: February 2025



A-White

B-Gray

C-Light pink

D-Light blue

Shorts

NEW

K241U-2027 (UNISEX)

Material: 93% polyester+7% spandex

Size: S/M/L/XL/2XL/3XL/4XL

Arrival time: February 2025



A-Dark blue

B-Purple

Tournament Apparel

NEW

K241M-1061 (MEN)

Material: 90% polyester+10% spandex

Size: S/M/L/XL/2XL/3XL/4XL

Arrival time: February 2025



A-Blue

B-Purple

Tournament Apparel

NEW

K241M-1070 (MEN)

K241W-1070 (WOMEN)

Material: 88% polyester+12% spandex

Size: S/M/L/XL/2XL/3XL/4XL

Arrival time: February 2025



A-Light pink

B-Light blue

Tournament Apparel

NEW

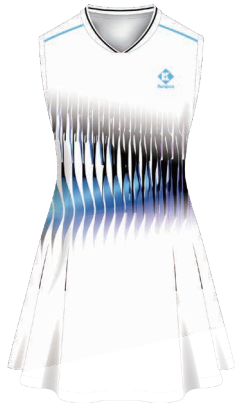
K241M-1071 (MEN)

K241W-1071 (WOMEN)

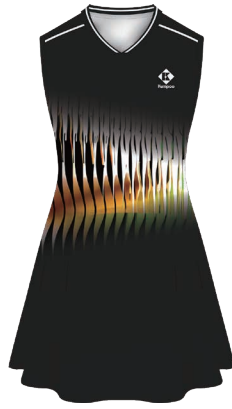
Material: 88% polyester+12% spandex

Size: S/M/L/XL/2XL/3XL/4XL

Arrival time: February 2025



A-White



B-Black

Dress

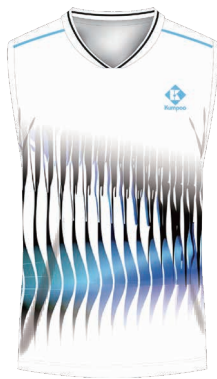
NEW

K241W-8103 (WOMEN)

Material: 100% polyester

Size: S/M/L/XL/2XL/3XL/4XL

Arrival time: February 2025



A-White



B-Black

Tournament Apparel

NEW

K241M-1102 (MEN)

Material: 100% polyester

Size: S/M/L/XL/2XL/3XL/4XL

Arrival time: February 2025



A-Dark blue



B-Purple

Shorts

NEW

K241M-1062 (MEN)

Material: 90% polyester+10% spandex

Size: S/M/L/XL/2XL/3XL/4XL

Arrival time: February 2025



A-Black

A-Blue

Shorts

NEW

K241U-2100 (UNISEX)

Material: 100% polyester

Size: S/M/L/XL/2XL/3XL/4XL

Arrival time: February 2025



Black

Shorts

NEW

K241U-2101 (UNISEX)

Material: 91% polyester+9% spandex

Size: S/M/L/XL/2XL/3XL/4XL

Arrival time: February 2025



A-Light green

B-White

C-Black

Skirts

NEW

K241W-7109 (WOMEN)

Material: 78% nylon+22% spandex

Size: S/M/L/XL/2XL/3XL/4XL

Arrival time: February 2025



A-Black



B-Purple

Skirts

NEW

K241W-7020 (WOMEN)

Material: 84% polyester+16% spandex

Size: S/M/L/XL/2XL/3XL/4XL

Arrival time: February 2025



A-White



B-Blue



C-Red

Tournament Apparel

NEW

K241M-1038 (MEN)

K241K-1038 (JUNIOR)

Material: 88% polyester+12% spandex

Size: S/M/L/XL/2XL/3XL/4XL

Arrival time: February 2025



A-White



B-Blue



C-Red

Tournament Apparel

NEW

K241W-1038 (MOMEN)

Material: 88% polyester+12% spandex

Size: S/M/L/XL/2XL/3XL/4XL

Arrival time: February 2025



A-White

B-Blue

C-Red

Tournament Apparel

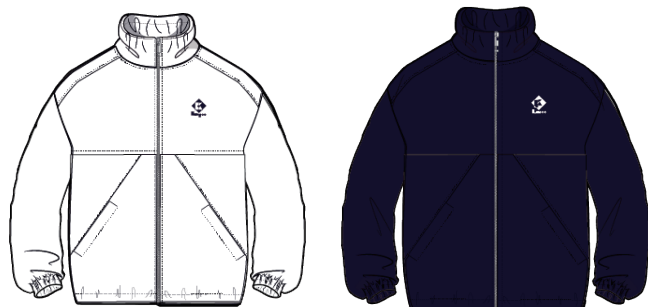
NEW

K241M-4038 (MEN)

Material: 88% polyester+12% spandex

Size: S/M/L/XL/2XL/3XL/4XL

Arrival time: February 2025



A-White

B-Blue

Jacket

NEW

K241U-5043 (UNISEX)

Material: 95% polyester+5% spandex

Size: S/M/L/XL/2XL/3XL/4XL

Arrival time: February 2025



A-White

B-Blue

Pants

NEW

K241U-6043 (UNISEX)

Material: 95% polyester+5% spandex

Size: S/M/L/XL/2XL/3XL/4XL

Arrival time: February 2025



A-White

B-Blue

C-Red

Shorts

NEW

K241M-2041 (MEN)

K241K-2041 (JUNIOR)

Material(MEN): 91% polyester+9% spandex

Material(JUNIOR): 88% polyester+12% spandex

Size: S/M/L/XL/2XL/3XL/4XL

Arrival time: February 2025



A-White

B-Blue

C-Red

Skirts

NEW

K241W-7042 (WOMEN)

Material: 84% polyester+16% spandex

Size: S/M/L/XL/2XL/3XL/4XL

Arrival time: February 2025



A-Light pink

B-Light blue

C-Light green

Tournament Apparel

NEW

K241W-1049 (MOMEN)

Material: 90% polyester+10% spandex

Size: S/M/L/XL/2XL/3XL/4XL

Arrival time: February 2025



White

Tournament Apparel

NEW

K241M-1104 (MEN)

K241W-1105 (WOMEN)

Material: 91% polyester+9% spandex

Size: S/M/L/XL/2XL/3XL/4XL

Arrival time: February 2025



A-White

B-Pink

Tournament Apparel

NEW

K241W-1106 (MOMEN)

Material: 91% polyester+9% spandex

Size: S/M/L/XL/2XL/3XL/4XL

Arrival time: February 2025



A-White

B-Dark blue

C-Red

Skirts

NEW

K241W-7107 (MOMEN)

Material: 84% polyester+16% spandex

Size: S/M/L/XL/2XL/3XL/4XL

Arrival time: February 2025



A-White



B-Dark blue

Dress

NEW

K241W-8108 (WOMEN)

Material: 100% polyester

Size: S/M/L/XL/2XL/3XL/4XL

Arrival time: February 2025



A-White



B-Black



C-Red

Tournament Apparel

NEW

K241U-1089 (UNISEX)

K241K-1090 (JUNIOR)

Material: 100% polyester

Size: S/M/L/XL/2XL/3XL/4XL

Arrival time: November 2024



A-Black



B-Red

Tournament Apparel

NEW

K241U-1091 (UNISEX)

K241K-1092 (JUNIOR)

Material: 88.5 cotton+11.5% polyester

Size: S/M/L/XL/2XL/3XL/4XL

Arrival time: November 2024



A-Pink/green

B-Pink



C-Green

D-Blue

E-Purple/gray

Tournament Apparel

NEW

K241M-1004 (MEN)

K241W-1004 (WOMEN)

Material: 88% polyester+12% spandex

Size: S/M/L/XL/2XL/3XL/4XL

Arrival time: February 2025



White

Tournament Apparel

NEW

K242M-1080 (MEN)

K242M-1080 (WOMEN)

Material: 100% polyester

Size: S/M/L/XL/2XL/3XL/4XL

Arrival time: February 2025



A-Black



B-White

Cultural Shirts

NEW

K241U-3007 (UNISEX)

Material: 100% polyester

Size: S/M/L/XL/2XL/3XL/4XL

Arrival time: February 2025



A-White



B-Blue



C-Light purple

Cultural Shirts

NEW

K241U-1044 (UNISEX)

Material: 100% polyester

Size: S/M/L/XL/2XL/3XL/4XL

Arrival time: February 2025



A-White



B-Light pink



C-Blue



A-White



B-Light pink



C-Blue

Cultural Shirts

NEW

K241U-1045 (UNISEX)

Material: 100% polyester

Size: S/M/L/XL/2XL/3XL/4XL

Arrival time: February 2025



A-White



B-Blue



C-Light green

Cultural Shirts

NEW

K241U-1046 (UNISEX)

Material: 100% polyester

Size: S/M/L/XL/2XL/3XL/4XL

Arrival time: February 2025



A-White

B-Black

C-Green

D-Purple

Cultural Shirts

NEW

K241U-1065 (UNISEX)

Material: 100% polyester

Size: S/M/L/XL/2XL/3XL/4XL

Arrival time: February 2025



A-Light pink

B-Light yellow

C-Light blue

Cultural Shirts

NEW

K241M-1075 (MEN)

K241W-1075 (WOMEN)

Material: 92% polyester+8% spandex

Size: S/M/L/XL/2XL/3XL/4XL

Arrival time: February 2025



Off-white

Cultural Shirts

NEW

K241U-1095 (UNISEX)

Material: 100% polyester

Size: S/M/L/XL/2XL/3XL/4XL

Arrival time: February 2025



A-White



B-Red



Kumpoo01 Series

NEW

K241U-5159 (UNISEX)

Material: 93% polyester+7% spandex

Size: S/M/L/XL/2XL/3XL

Arrival time: August 20th 2024



A-Black



B-Gray



Kumpoo01 Series

NEW

K241U-5082 (UNISEX)

Material: 86% polyester+14% spandex

Size: XS/S/M/L/XL/2XL/3XL

Arrival time: August 20th 2024



A-Black



B-Red



Kumpoo01 Series

NEW

K241U-3158 (UNISEX)

Material: 56.49% cotton+43.51% polyester

Size: S/M/L/XL/2XL/3XL

Arrival time: August 20th 2024



A-White

B-Navy blue

C-Blue



Kumpoo01 Series

NEW

K243U-3103 (UNISEX)

Material: 73.31% cotton+26.69%polyester

Size: XS/S/M/L/XL/2XL/3XL

Arrival time: August 20th 2024



A-Black

B-Purple



Kumpoo01 Series

NEW

K242U-5055 (UNISEX)

Material: 100% polyester

Size: S/M/L/XL/2XL/3XL

Arrival time: August 20th 2024



A-Black

B-Purple



Kumpoo01 Series

NEW

K242U-6056 (UNISEX)

Material: 89.5% polyester+10.5% spandex

Size: S/M/L/XL/2XL/3XL

Arrival time: August 20th 2024



A-Black

B-Green



Kumpoo01 Series

NEW

K242U-3119 (UNISEX)

Material: 56.49% cotton+43.51% polyester

Size: XS/S/M/L/XL/2XL/3XL

Arrival time: August 20th 2024



Black



Kumpoo01 Series

NEW

K242U-6120 (UNISEX)

Material: 56.49% cotton+43.51% polyester

Size: XS/S/M/L/XL/2XL/3XL

Arrival time: August 20th 2024



A-Black

B-Red

C-Blue



Kumpoo01 Series

NEW

K242U-9170 (UNISEX)

Material: 88.5% cotton+11.5% polyester

Size: XS/S/M/L/XL/2XL/3XL

Arrival time: August 20th 2024



Black



Kumpoo01 Series

NEW

K242M-6171 (MEN)

Material: 88.5% cotton+11.5% polyester

Size: XS/S/M/L/XL/2XL/3XL

Arrival time: August 20th 2024



A-White



B-Blue



C-Purple



Kumpoo01 Series

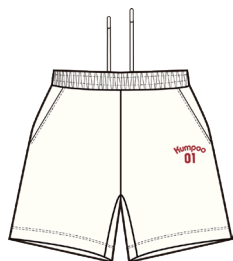
NEW

K242U-3151 (UNISEX)

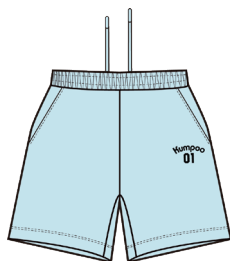
Material: 58.5% cotton+41.5% polyester

Size: XS/S/M/L/XL/2XL/3XL

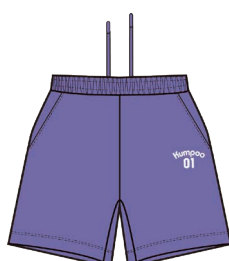
Arrival time: August 20th 2024



A-White



B-Blue



C-Purple



Kumpoo01 Series

NEW

K242U-2152 (UNISEX)

Material: 58.5% cotton+41.5% polyester

Size: XS/S/M/L/XL/2XL/3XL

Arrival time: August 20th 2024



A-White



B-Red



Kumpoo01 Series

NEW

K241U-5023 (UNISEX)

Material: 95% polyester+5% spandex

Size: XS/S/M/L/XL/2XL/3XL

Arrival time: August 20th 2024



A-White



B-Navy blue



Kumpoo01 Series

NEW

K241U-5025 (UNISEX)

Material: 95% polyester+5% spandex

Size: XS/S/M/L/XL/2XL/3XL

Arrival time: August 20th 2024



A-White



B-Navy blue



Kumpoo01 Series

NEW

K241U-6026 (UNISEX)

Material: 95% polyester+5% spandex

Size: XS/S/M/L/XL/2XL/3XL

Arrival time: August 20th 2024



Black



Kumpoo01 Series

NEW

K242W-5073 (WOMEN)

Material: 28% nylon+66% rayon+6% spandex

Size: XS/S/M/L/XL/2XL/3XL

Arrival time: August 20th 2024



Black



Kumpoo01 Series

NEW

K242W-7075 (WOMEN)

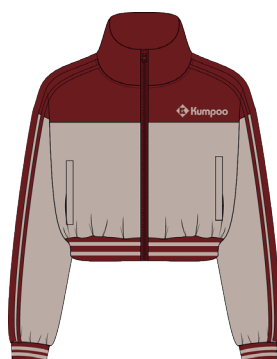
Material: 28% nylon+66% rayon+6% spandex

Size: XS/S/M/L/XL/2XL/3XL

Arrival time: August 20th 2024



A-Black/pink



B-Red/brown



Kumpoo01 Series

NEW

K242W-5124 (WOMEN)

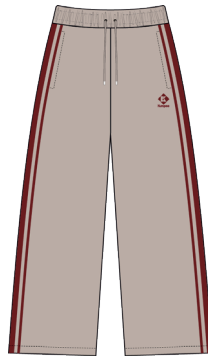
Material: 58.5% cotton+41.5% polyester

Size: XS/S/M/L/XL/2XL/3XL

Arrival time: August 20th 2024



A-Black/pink



B-Red/brown



Kumpoo01 Series

NEW

K242W-6125 (WOMEN)

Material: 58.5% cotton+41.5% polyester

Size: XS/S/M/L/XL/2XL/3XL

Arrival time: August 20th 2024



Mid Heather Gray



Kumpoo01 Series

NEW

K242W-9069 (WOMEN)

Material: 85% cotton+15% polyester

Size: XS/S/M/L/XL/2XL/3XL

Arrival time: August 20th 2024



Mid Heather Gray



Kumpoo01 Series

NEW

K242W-6070 (WOMEN)

Material: 85% cotton+15% polyester

Size: XS/S/M/L/XL/2XL/3XL

Arrival time: August 20th 2024



A-Blue

B-Black

C-Pink



Kumpoo01 Series

NEW

K242W-5144 (WOMEN)

Material: 73.35% cotton+17.15% polyester
+7.5% spandex

Size: XS/S/M/L/XL/2XL/3XL

Arrival time: August 20th 2024



A-Blue

B-Black

C-Pink



Kumpoo01 Series

NEW

K242W-6145 (WOMEN)

Material: 73.35% cotton+17.15% polyester
+7.5% spandex

Size: XS/S/M/L/XL/2XL/3XL

Arrival time: August 20th 2024



A-Off-white

B-Black

C-Purple



B.DUCK Series

NEW

KKU-1036 B.DUCK (UNISEX)

Material: 73.31% cotton+26.69% polyester

Size: XS/S/M/L/XL/2XL

Arrival time: September 2024



A-Off-white

B-Black

C-Red

D-Purple



B.DUCK Series

NEW

KKU-1037 B.DUCK (UNISEX)

Material: 73.31% cotton+26.69% polyester

Size: XS/S/M/L/XL/2XL

Arrival time: September 2024



A-Off-white

B-Gray



B.DUCK Series

NEW

KKU-1039 B.DUCK (UNISEX)

Material: 73.31% cotton+26.69% polyester

Size: XS/S/M/L/XL/2XL

Arrival time: September 2024



A-Off-white

B-Red

C-Purple



B.DUCK Series

NEW

KKU-1048 B.DUCK (UNISEX)

Material: 73.31% cotton+26.69% polyester

Size: XS/S/M/L/XL/2XL

Arrival time: September 2024



A-Off-white

B-Red

C-Black



B.DUCK Series

NEW

KKU-2058 B.DUCK (UNISEX)

Material: 85.3% cotton+14.7% polyester

Size: XS/S/M/L/XL/2XL

Arrival time: September 2024



A-Off-white

B-Pink

C-Blue



B.DUCK Series

NEW

KKU-9042 B.DUCK (UNISEX)

KKK-0959 B.DUCK (JUNIOR)

Material: 93% polyester+7% spandex

Size: S/M/L/XL/2XL/3XL

Arrival time: September 2024



A-Black

B-Gray



B.DUCK Series

NEW

KKU-6049 B.DUCK (UNISEX)

Material: 93% polyester+7% spandex

Size: S/M/L/XL/2XL/3XL

Arrival time: September 2024



A-Off-white

B-Black



B.DUCK Series

NEW

KKU-9047 B.DUCK (UNISEX)

Material: 85.3% cotton+14.7% polyester

Size: XS/S/M/L/XL/2XL

Arrival time: September 2024



A-Off-white

B-Black



B.DUCK Series

NEW

KKU-6057 B.DUCK (UNISEX)

Material: 85.3% cotton+14.7% polyester

Size: XS/S/M/L/XL/2XL

Arrival time: September 2024



A-Off-white

B-Black

C-Red



B.DUCK Series

NEW

KKU-9053 B.DUCK (UNISEX)

Material: 85.3% cotton+14.7% polyester

Size: XS/S/M/L/XL/2XL

Arrival time: September 2024



A-Black

B-Gray



B.DUCK Series

NEW

KKU-6054 B.DUCK (UNISEX)

Material: 85.3% cotton+14.7% polyester

Size: S/M/L/XL/2XL/3XL

Arrival time: September 2024



A-Navy blue

B-Purple



B.DUCK Series

NEW

KKU-5055 B.DUCK (UNISEX)

Material: 93% polyester+7% spandex

Size: S/M/L/XL/2XL/3XL

Arrival time: September 2024



A-Navy blue

B-Purple



B.DUCK Series

NEW

KKU-6056 B.DUCK (UNISEX)

Material: 93% polyester+7% spandex

Size: S/M/L/XL/2XL/3XL

Arrival time: September 2024



A-White

B-Green

C-Yellow

Pickleball Apparel

NEW

K241W-1096 (WOMEN)

Material: 72% cotton+28% sorona polyester

Size: XS/S/M/L/XL

Arrival time: February 2025



A-White

B-Green

Pickleball Apparel

NEW

K241W-7097 (WOMEN)

Material: 100% polyester

Size: XS/S/M/L/XL

Arrival time: February 2025



A-White

B-Green

C-Blue

Pickleball Apparel

NEW

K214W-4098 (WOMEN)

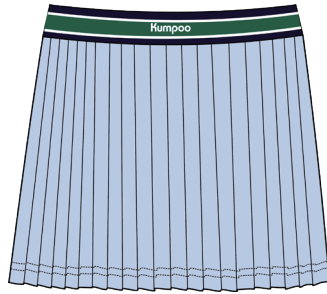
Material: 72% cotton+28% sorona polyester

Size: XS/S/M/L/XL

Arrival time: February 2025



A-White



B- Blue

Pickleball Apparel

NEW

K241W-7099 (WOMEN)

Material: 88% polyester+12% spandex

Size: XS/S/M/L/XL

Arrival time: February 2025



A-White



B- Dark blue

Pickleball Apparel

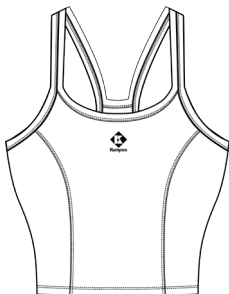
NEW

K241W-4100 (WOMEN)

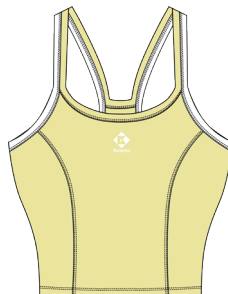
Material: 88% polyester+12% spandex

Size: XS/S/M/L/XL

Arrival time: February 2025



A-White



B- Yellow

Pickleball Apparel

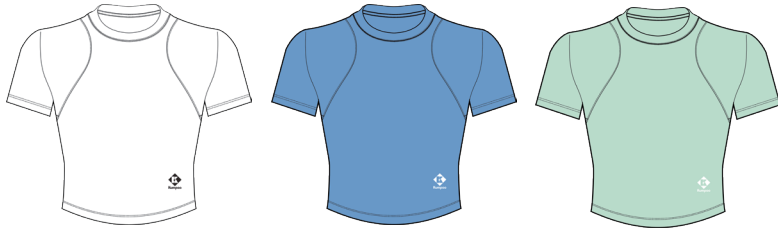
NEW

K241W-4103 (WOMEN)

Material: 88%cotton+12% spandex

Size: XS/S/M/L/XL

Arrival time: February 2025



A-White

B- Blue

C-Green

Pickleball Apparel

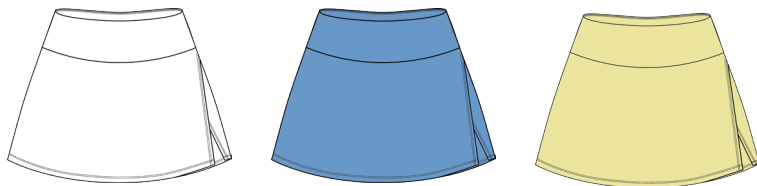
NEW

K241W-1105 (WOMEN)

Material: 88% cotton+12% spandex

Size: XS/S/M/L/XL

Arrival time: February 2025



A-White

B- Blue

C-Yellow

Pickleball Apparel

NEW

K241W-7104 (WOMEN)

Material: 88% cotton+12% spandex

Size: XS/S/M/L/XL

Arrival time: February 2025



A-Yellow

B-Green

C- Blue

Pickleball Apparel

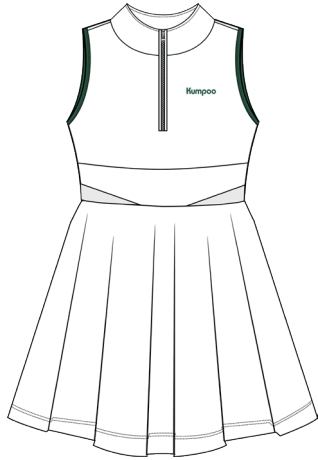
NEW

K241W-1080 (WOMEN)

Material: 100% polyester

Size: XS/S/M/L/XL

Arrival time: February 2025



A-White



B- Yellow

Pickleball Apparel

NEW

K241W-8101 (WOMEN)

Material: 72% cotton+28% sorona polyester

Size: XS/S/M/L/XL

Arrival time: February 2025



A-Navy blue



B- Blue

Pickleball Apparel

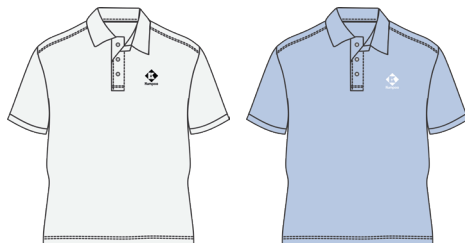
NEW

K241W-8102 (WOMEN)

Material: 88% polyester+12% spandex

Size: XS/S/M/L/XL

Arrival time: February 2025



A-White

B- Blue



C-Green

D- Light green

E- Dark blue

Pickleball Apparel

NEW

K241U-1106 (UNISEX)

Material: 72% cotton+28% sorona polyester

Size: XS/S/M/L/XL

Arrival time: February 2025



A-White

B- Blue

C- Black

Pickleball Apparel

NEW

K241W-1083 (WOMEN)

Material: 72% cotton+28% sorona polyester

Size: XS/S/M/L/XL

Arrival time: February 2025



A-White



B- Black

KW-3060 (UNISEX)

Material: 95% polyester+5% spandex

Size: XS/S/M/L/XL/2XL/3XL

Arrival time: In stock



Black

KP-360 (UNISEX)

Material: 95% polyester+5% spandex

Size: XS/S/M/L/XL/2XL/3XL

Arrival time: In stock

BAGS SERIES



Kumpoo®







A-Black



B-Khaki



C-Off-white

Outdoors Series

KB-521 Backpack

NEW

Size: 45*30*16cm

Material: PU coated oxford fabric

Function: 

Arrival time: January 2025



A-Black



B-Khaki



C-Off-white

Outdoors Series

KB-531 Square Bag

NEW

Size: 48*27*17cm

Material: PU coated oxford fabric

Function: 

Arrival time: January 2025



A-Black



B-Khaki



C-Off-white

Outdoors Series

KB-511 Leisure Bag

NEW

Size: 48*15*32cm

Material: PU coated oxford fabric

Function: 

Arrival time: January 2025



A-Black



B-Khaki



C-Off-white

Outdoors Series

KB-571 Leisure Bag

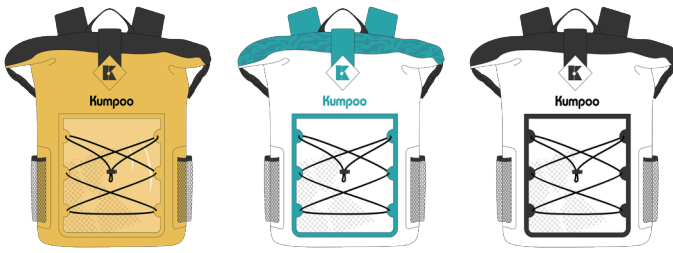
NEW

Size: 24*17*8cm

Material: PU coated oxford fabric

Function: 

Arrival time: January 2025



A-Yellow/black B-White/green C-White/black

Outdoors Series

KB-522 Backpack

NEW

Size: 76*42*16cm(Flat) 52*43*16cm(Roll)

Material: PVC

Function: 

Arrival time: January 2025



A-Yellow/black B-White/green C-White/black


Outdoors Series

KB-574 Leisure Bag

NEW

Size: 25*13*13cm

Material: PVC

Function: 

Arrival time: January 2025



A-Green B-Purple C-Orange

Eye Catching Series

KB-527 Backpack

NEW

Size: 45*33*16cm

Material: Fabric

Function: 

Arrival time: January 2025



A-Green B-Purple C-Orange

Eye Catching Series

KB-565 Square Bag

NEW

Size: 72*34*20cm

Material: Fabric

Function: 

Arrival time: January 2025



A-Green

B-Purple

C-Orange

Eye Catching Series

KB-575 Leisure Bag

NEW

Size: 21*7*17cm

Material: Fabric

Function: 

Arrival time: January 2025



A-Yellow

B-Blue

KB-512 Leisure Bag

NEW

Size: 38*31*14cm

Material: Denim

Function:  

Arrival time: January 2025



A-White/pink

B-White/blue

KB-524 Backpack

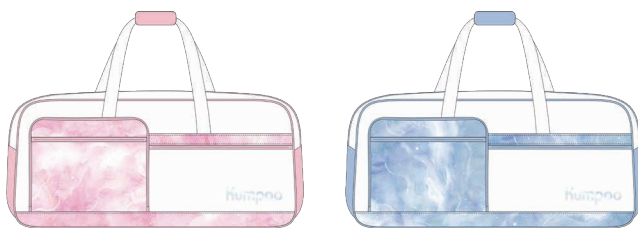
NEW

Size: 50*18*32cm

Material: Synthetic leather

Function:     

Arrival time: January 2025



A-White/pink

B-White/blue

KB-564 Square Bag

NEW

Size: 75*18*32cm

Material: Synthetic leather

Function:     

Arrival time: January 2025



A-Black/white B-Cream white C-White/blue

KB-526 Backpack 

Size: 46*33*22cm

Material: Fabric

Function: 

Arrival time: January 2025



A-Black B-Khaki C-Purple

KB-525 Backpack 

Size: 49*18*31cm

Material: Twill

Function: 

Arrival time: January 2025



A-Blue/orange B-Purple/green

KB-523 Children's Backpack 

Size: 41*30*16cm

Material: Fabric

Function: 

Arrival time: January 2025



Front Back

Off white/yellow

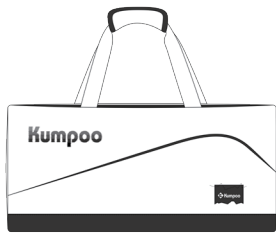
KB-369 B.DUCK Square Bag 

Size: 68*30*19cm

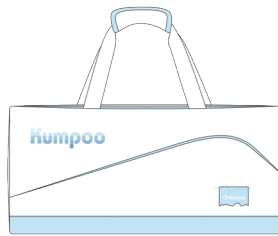
Material: Synthetic leather

Function: 

Arrival time: January 2025



A-White/black



B-White/blue

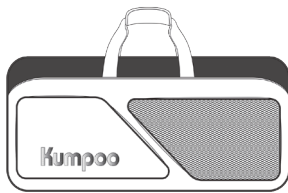
KB-562 Square Bag 

Size: 70*32*23cm

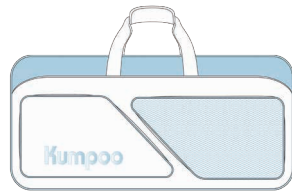
Material: PU

Function: 


Arrival time: January 2025



A-White/black



B-White/blue

KB-561 Square Bag 

Size: 75*19*32cm

Material: Semi-silicon leather

Function: 

Arrival time: January 2025



A-Black



B-Purple



C-Blue

KB-563 Square Bag 

Size: 75*32*24cm

Material: PU

Function: 

Arrival time: January 2025



A-Black



B-Purple



C-Blue

KB-576 Leisure Bag 

Size: 20*20*7cm

Material: PU

Function: 

Arrival time: January 2025



A-Black



B-White/red



C-White/black

KB-591 Square Bag

NEW

Size: 74*30*33cm

Material: Synthetic leather

Function:     

Arrival time: January 2025




Yellow/green

KB-329 Backpack

Size: 33*18*51cm

Material: Synthetic leather+fabric

Function: 

Arrival time: In stock



A-Black

B-Yellow

KB-369 Square Bag

Size: 68*30*19cm

Material: Synthetic leather+fabric

Function: 

Arrival time: In stock



A-White/purple



B-White/black

KB-326 Backpack

Size: 47*16*36cm

Material: Synthetic leather

Function: 

Arrival time: In stock



A-White/black

B-Black

C-White/purple

KB-366 Square Bag

Size: 75*20*34cm

Material: Synthetic leather+Thermal-protective coating

Function: 

Arrival time: In stock



A-Blue



B-Silver

KB-413 Leisure Bag

Size: 40*32*11cm

Material: Fabric

Function:  

Arrival time: In stock



A-Silver



B-Black

KB-423 Square Bag

Size: 30*15*46cm

Material: Synthetic leather+fabric

Function:     

Arrival time: In stock



A-White/black



B-White/brown

Tennis Series

KB-581 Square Bag

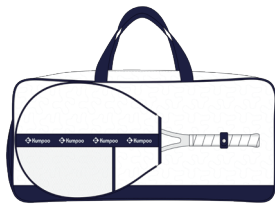
NEW

Size: 46*36*16cm

Material: PU

Function: 

Arrival time: In stock



A-White/black



B-White/brown


Tennis Series

KB-582 Square Bag

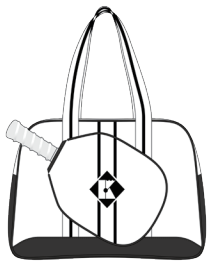
NEW

Size: 73*32*20cm

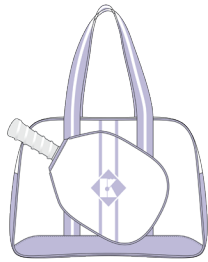
Material: PU

Function: 

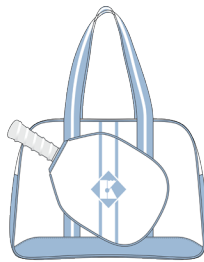
Arrival time: In stock



A-White/black



B-White/purple



C-White/blue

Pickleball Series

KB-541 Square Bag

NEW

Size: 46*32*16cm

Material: Synthetic leather

Function: 

Arrival time: In stock



A-Black



B-Purple/black



C-White/blue

Pickleball Series

KB-551 Backpack

NEW

Size: 48*30*15cm

Material: Synthetic leather

Function: 

Arrival time: In stock

FUNCTIONS



Badminton Racket Compartment



Tennis Racket Compartment



Pickleball Racket Compartment



Separated Shoe Garage



Portable External Bag



Shoulder Braces



Wear-resistant pad



Retractable Strap



Multifunctional Sidekick



Built-in Accessories Pocket



Aluminium Foil Thermal Coating



Waterproof



Outdoors



Breathable

SHUTTLECOCKS SERIES







Nylon Shuttlecocks S-107

Material:	Nylon+Composite cork
Speed:	Medium
Quantity:	6pcs/tube
Application:	Amateur training
Arrival time:	November 2024



Nylon Shuttlecocks S-108

Material:	Nylon+Composite cork
Speed:	Medium
Quantity:	6pcs/tube
Application:	Amateur training
Arrival time:	November 2024



Nylon Shuttlecocks S-300II

Material:	Nylon
Speed:	Composite cork
Quantity:	6pcs/tube
Application:	Amateur training
Arrival time:	November 2024



KUMPOO RED 2

Feathers:	Natural duck feather
Cork:	Composited cork
Quantity:	12pcs/tube
Application:	Professional competition
Stability:	Class A, Class B



KUMPOO RED 3

Feathers:	Natural duck feather
Cork:	Composited cork
Quantity:	12pcs/tube
Application:	Professional competition
Stability:	Class A, Class B



KUMPOO RED 4

Feathers:	Natural goose feather
Cork:	Composited cork
Quantity:	12pcs/tube
Application:	Professional competition
Stability:	Class A, Class B



BAMBOO

Feathers:	Natural goose feather
Cork:	Composited 2 layers cork
Quantity:	12pcs/tube
Application:	Professional competition
Stability:	Class A, Class B



GAME POINT 99



Feathers:	Natural goose feather
Cork:	Soft wooden cork
Quantity:	12pcs/tube
Application:	Professional competition
Stability:	Class A

TENNIS RACKET SERIES





TAKE THE CHALLENGE

FULL CARBON BADMINTON RACKET

KTE-800

Kumpoo





A-Pink

B-Purple

KTE-001

NEW

Weight:	285±10g
Balance:	320±10mm
Length:	685mm
Grip size:	L2
Holes:	70
Grip handle:	Pu Foaming
Racket material:	Aluminum Alloy Nylon
String Tension:	50-55RA
Arrival time:	to be confirmed



Racket Bag



A-Dark blue

B-White

C-Pink

KTE-002

NEW

Weight:	285±10g
Balance:	320±10mm
Length:	685mm
Grip size:	L2
Holes:	70
Grip handle:	Pu Foaming
Racket material:	Aluminum Alloy Nylon
String Tension:	50-55RA
Arrival time:	to be confirmed



Racket Bag



A-Green

B-Blue

KTE-003

NEW

Weight:	285±10g
Balance:	320±10mm
Length:	685mm
Grip size:	L2
Holes:	70
Grip handle:	Pu Foaming
Racket material:	Aluminum Alloy Nylon
String Tension:	50-55RA
Arrival time:	to be confirmed



Racket Bag



A-White/black

B White/dark blue

C-Pink

KTE-005

NEW

Weight:	285±10g
Balance:	320±10mm
Length:	685mm
Grip size:	L2
Holes:	70
Grip handle:	Pu Foaming
Racket material:	Aluminum Alloy Nylon
String Tension:	50-55RA
Arrival time:	to be confirmed



Racket Bag



White/yellow

KTE-500

NEW

Weight:	285±5g
Balance:	330±10mm
Length:	685mm
Grip size:	L2
Holes:	70
Grip handle:	Pu Foaming
Racket material:	Aluminum Alloy Nylon
String Tension:	50-55RA
Arrival time:	to be confirmed



Racket Bag



A-Red

B-Blue

KTE-800

NEW

Weight:	285±5g
Balance:	320±10mm
Length:	685mm
Grip size:	L2
Holes:	70
Grip handle:	Pu Foaming
Racket material:	Carbon graphite
String Tension:	50-55RA
Arrival time:	to be confirmed



Racket Bag



KTQ-W40

Quantity: 3pcs/bag
 Grade: Qualified product
 Material: Natural rubber+45% wool
 Size: 63-65mm
 Weight: 53-59g
 Bounce: 135-147cm
 Arrival time: to be confirmed



KTO-W50

Quantity: 3pcs/bag
 Grade: Qualified product
 Material: Natural rubber+57% wool
 Size: 63-65mm
 Weight: 53-59g
 Bounce: 135-147cm
 Arrival time: to be confirmed

PICKLEBALL SERIES







A-Green

B-Purple

C-Pink

sunniness03

NEW

Weight:	230±5g
Thickness:	10.5mm
Grip size:	L2
Length:	40.5cm
Process:	Cold press molding
Racket material:	Glass fiber+PP core
Arrival time:	to be confirmed



Racket Bag



A-Green

B-Purple

C-Pink

sunniness05

NEW

Weight:	230±5g
Thickness:	14mm
Grip size:	L2
Length:	40.5cm
Process:	Cold press molding
Racket material:	Glass fiber+PP core
Arrival time:	to be confirmed



Racket Bag



A-Yellow B-Blue C-Red D-Orange

AngellAG40

NEW

Weight:	230±5g
Thickness:	14mm
Grip size:	L2
Length:	40.5cm
Process:	Cold press molding
Racket material:	Carbon graphite+PP core
Arrival time:	to be confirmed



Racket Bag



A-Pink B-Blue C-Orange D-Yellow

AngellAG50

NEW

Weight:	220±10g
Thickness:	11mm
Grip size:	L2
Length:	40cm
Process:	Hot press molding
Racket material:	Carbon fiber+PP core
Arrival time:	to be confirmed



Racket Bag



A-Orange B-Pink C-Blue D-Yellow

AngellAG85

NEW

Weight:	230±10g
Thickness:	14mm
Grip size:	L2
Length:	41.6cm
Process:	Hot press molding
Racket material:	T700 carbon fiber+PP core
Arrival time:	to be confirmed



Racket Bag



A-Blue



B-Green

C-Purple

SURPASS MYSTERY2

NEW

Weight:	225±5g
Thickness:	16mm
Grip size:	L2
Length:	40.5cm
Process:	Hot press molding
Racket material:	T300 carbon fiber+3K carbon cloth+PP core
Arrival time:	to be confirmed



Gift Box



A-Brown



B-Purple

C-Green

SURPASS MYSTERY6

NEW

Weight:	235±5g
Thickness:	14mm
Grip size:	L2
Length:	41.5cm
Process:	Hot press molding
Racket material:	T300 carbon fiber+UD surface with UV printing+PP core
Arrival time:	to be confirmed



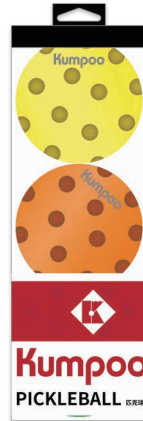
Gift Box



KPQ-L26

NEW

Color:	Mixed color
Quantity:	3pcs/tube
Grade:	Qualified product
Material:	TPE
Weight:	23±1g
Construction:	Injection moulding 26 holes
Arrival time:	to be confirmed



KPQ-L40

NEW

Color:	Mixed color
Quantity:	3pcs/tube
Grade:	Qualified product
Material:	TPE
Weight:	23±1g
Construction:	Injection moulding 40 holes
Arrival time:	to be confirmed



KPQ-L40Y

NEW

Color:	Mixed color
Quantity:	3pcs/tube
Grade:	Qualified product
Material:	TPE
Weight:	23±1g
Construction:	luminous injection moulding 40 holes
Arrival time:	to be confirmed



KPQ-R40

NEW

Color:	Mixed color
Quantity:	3pcs/tube
Grade:	Qualified product
Material:	TPE
Weight:	23±1g
Construction:	Rotational moulding 40 holes
Arrival time:	to be confirmed

ACCESSORIES SERIES





MADE IN JAPAN

JS-63

RECOMMENDED

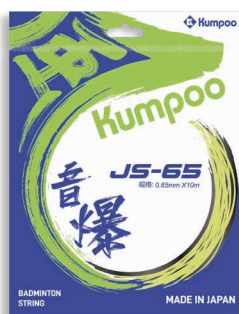
NEW

Material: Ultra high strength nylon

Structure: Multifilament+Braiding Process

Size: 0.63mm*10m

Arrival time: To be confirmed



MADE IN JAPAN

JS-65

RECOMMENDED

NEW

Material: Ultra high strength nylon

Structure: Multifilament+Braiding Process

Size: 0.65mm*10m

Arrival time: To be confirmed



MADE IN JAPAN

JS-67

RECOMMENDED

NEW

Material: Ultra high strength nylon

Structure: Multifilament+Braiding Process

Size: 0.67mm*10m

Arrival time: To be confirmed



MADE IN JAPAN

JS-69

RECOMMENDED

NEW

Material: Ultra high strength nylon

Structure: Multifilament+Braiding Process

Size: 0.69mm*10m

Arrival time: To be confirmed



K65

Material:	High strength nylon multifilament
Color:	Black; White; Blue; Light blue; Rose; Yellow
Size:	0.70mm*10m
Functions:	Great durability, wear resistance



K68

Material:	High strength nylon multifilament
Color:	Rose; White; Yellow; Light blue; Blue
Size:	0.68mm*10m
Functions:	Good elasticity, durability and control



K70

Material:	High strength nylon multifilament
Color:	Rose; Yellow; White; Light blue; blue; Pink
Size:	0.66mm*10m
Functions:	High rebound elasticity and crispness



KS-58

Material:	High strength nylon multifilament
Color:	White; Yellow; Light blue; Blue; Rose
Size:	0.67mm*10m
Functions:	High rebound elasticity and crispness

TW-1.0 STRING MACHINE KSM-726

NEW

Description: Curved rails, Automatic brake system, Self checking function, Memory function
Pneumatic adjustable pole, Pre-stretch setting

Color: Red/white

Origin: Taiwan, China



FRONT



TOP

Functions description

- *Chain drive combined with high-precision pressure sensor and microcomputer processor to accurately control tension.
- *Auto-manual locking switch, delay locking function.
- *Optional pre-stretch functionality at either 5% or 20%.
- *Remember 3 personal user settings.

Racket mounting system

- *Tension control system with true constant pull avoids any tension loss during the stringing process.
- *longer racket rail.
- *6 points mounting system.
- *360 degree swivel turntable with automatic brake system.
- *Suited to every kind of badminton racket, mounting poles are made of stainless steel that is anti-corrosion.
- *4 racket clamps are made of Aluminium alloy, anti oxidation and anti friction.

Support and storage system

- *Steel machine pole, ABS plaque.
- *Pneumatic adjustable pole height from 105-115CM.
- *Convenient tool storage area.
- *Hidden power connection.

KSM-390

Description: Optical digital control, Mounting rackets synchronously, DC-100 auto base
Automatic brake, Digital control panel, Independent switch

Color: Red

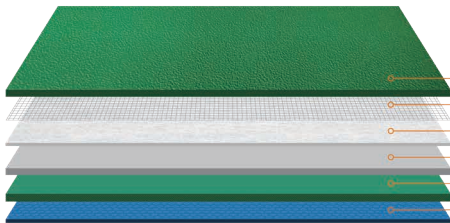




NET POLES
KNP-10



Material:	Iron
Base size:	67.3*45*15.8cm
Height:	1.55m
Weight:	180kg



- 0.4mm wear resistant anti-slip layer
- High strength glass fiber layer
- High density glass fiber layer
- 0.8mm PVC reinforced layer
- Shock absorbing layer
- Hexagonal texture

TOURNAMENT FLOORING
KSF-10



Material:	PVC
Size:	15*7.2m
Thickness:	4.8±0.5mm
Weight:	BWF approved Grade 1; Flame retardant
Layers:	6



- PVC wear resistant layer
- Glass fiber stable layer
- PVC foaming layer

PROFESSIONAL FLOORING
KSF-30



Material:	PVC
Size:	15*7.2m
Thickness:	4.8±0.5mm
Features:	BWF approved Grade 3
Layers:	3



White

KSO-415 B.DUCK

NEW

Material:	78% cotton+20% polyester+2% spandex
Size:	24-26
Features:	Breathable and skin friendly; good elasticity tear resistant
Arrival time:	September 2024



White/black

KSO-416 B.DUCK

NEW

Material:	78% cotton+20% polyester+2% spandex
Size:	24-26
Features:	Breathable and skin friendly; good elasticity tear resistant
Arrival time:	September 2024



White

KSO-417 B.DUCK (JUNIOR)

NEW

Material:	68% cotton+30% polyester+2% spandex
Size:	18-22
Features:	Breathable and skin friendly; fitting; moisture- absorption
Arrival time:	September 2024



Yellow/black

KSO-418 B.DUCK

NEW

Material:	78% cotton+20% polyester+2% spandex
Size:	24-26
Features:	Breathable and comfortable; fashionable
Arrival time:	September 2024

 B.DUCK ACCESSORIES



Yellow

KSO-419 B.DUCK



Material: 78% cotton+20% polyester+2% spandex

Size: 24-26

Features: Breathable and comfortable; fashionable

Arrival time: September 2024



Yellow

HEADBAND
KHD-403 B.DUCK



Material: 68% cotton+30% polyester+2% spandex

Size: 24-26

Packing: 1piece/bag

Arrival time: September 2024



Yellow

TOWEL
KT-410 B.DUCK



Material: 100% polyester

Size: 39*90cm

Packing: 1piece/bag

Arrival time: September 2024



Yellow

WRISTBAND
KWT-403 B.DUCK



Material: 68% cotton+30% polyester+2% spandex

Size: 8*8cm

Packing: 1piece/bag

Arrival time: September 2024



GRIP
KG-88 B.DUCK

NEW

Material: Polyurethane+Non-woven fabric

Size: 1100*25mm*0.6mm

Color: White/yellow; Pink/purple

Arrival time: September 2024



STRING
K66 B.DUCK

NEW

Material: High strength nylon multifilament

Size: 0.67mm*10m

Color: White/yellow; White/blue

Functions: High rebound elasticity; crisp sound; good control

Arrival time: September 2024



B.DUCK Nylon Shuttlecocks

NEW

Material: Nylon+PU foaming cork

Speed: Medium

Quantity: 6pcs/tube

Feature: durable

Arrival time: September 2024



GRIP
KG-13 (3PCS)

NEW

Material:	Polyurethane+Non-woven fabric
Size:	1200*25mm*0.65mm
Color:	White; Black; Pink; Purple; Blue; Green
Arrival time:	January 2025



TOWEL GRIP
KG-12

NEW

Material:	100% Cotton
Size:	750*30mm*2.4mm
Color:	Purple;Blue;Pink;Yellow;Green
Arrival time:	January 2025



TOWEL GRIP
KG-12(10m)

NEW

Material:	100% Cotton
Size:	750*30mm*2.4mm
Color:	Purple;Blue;Pink;Yellow;Green
Arrival time:	January 2025



GRIP
KG-30 (2PCS)

Material:	Polyurethane+Non-woven fabric
Size:	25*1100*0.7mm
Color:	Red; Yellow; Blue; Green;Black;White; Purple Pink; Mint blue
Functions:	Good slip-proof and sticky functions with great sweat absorption
Arrival time:	In stock



GRIP
KG-30 (9PCS)

Material:	Polyurethane+Non-woven fabric
Size:	25*1100*0.7mm
Color:	Red; Yellow; Blue; Green;Black;White; Purple Pink; Mint blue
Functions:	Good slip-proof and sticky functions with great sweat absorption
Arrival time:	In stock



GRIP
KG-301 (60PCS/BOX)

Material:	Polyurethane+High cotton
Size:	25*1200*0.6mm
Color:	White;Black;Purple;Green;Yellow;Pink
Functions:	Comfortable and slip-proof
Arrival time:	In stock



GRIP
KG-302 (60PCS/BOX)

Material:	Polyurethane+Non-woven fabric
Size:	25*1200*0.75mm
Color:	Red;Black;Green;Light purple;Light pink;Mint blue;White;Orange;Yellow;Mix
Functions:	Soft,comfortable with great durability
Arrival time:	In stock



A-White/black



B-White/blue



C-White/pink

KSO-446J (JUNIOR)

NEW

Material: 87% Cotton + 11% polyester + 2% spandex

Size: 18-22

Features: 7A anti-microbial; Breathable and skin-friendly with good slip-proof

Arrival time: January 2025



A-Blue



B-Pink



C-White



D-Black

KSO-447 (UNISEX)

NEW

Material: 87% Cotton + 11% polyester + 2% spandex

Size: 24-26

Features: 7A anti-microbial and good slip-proof with breathability

Arrival time: January 2025



A-White/black



B-White/pink



C-White/purple



D-Blue

KSO-448 (UNISEX)

NEW

Material: 87% Cotton + 11% polyester + 2% spandex

Size: 24-26

Features: 7A anti-microbial and good slip-proof with breathability

Arrival time: January 2025



A-White/purple



B-White/pink



C-White/green



D-White/black

KSO-449 (UNISEX)

NEW

Material: 87% Cotton + 11% polyester + 2% spandex

Size: 24-26

Features: 7A anti-microbial and good slip-proof with breathability

Arrival time: January 2025



A-Black



B-Gray



C-White

KSO-431 (UNISEX)



Material: 87% cotton + 11%polyester + 2%spandex

Size: 24-26

Features: 7A anti-microbial and good slip-proof with breathability

Arrival time: January 2025



A-Pink



B-Blue

KSO-432W (FEMALE)



Material: 87%Cotton + 11% polyester + 2%spandex

Size: 22-24

Features: Leg shaping and fashionable

Arrival time: January 2025



A-Blue



B-Pink

KSO-433 (UNISEX)



Material: 87% Cotton + 11%polyester + 2%spandex

Size: 24-26

Features: Anti-slip;thickened and tear-resistant

Arrival time: January 2025



A-Black



B-Pink



C-Blue

KSO-434 (UNISEX)



Material: 87%Cotton + 11% polyester + 2%spandex

Size: 24-26

Features: Anti-slip;thickened and tear-resistant

Arrival time: January 2025



A-White/pink



B-White/blue



C-White/purple

KSO-435J (JUNIOR)

NEW

Material: 87% cotton + 11%polyester + 2%spandex

Size: 18-22

Features: Anti-slip design,shock absorption

Arrival time: January 2025



A-White/black



B-White/pink



C-White/purple

KSO-436 (UNISEX)

NEW

Material: 87% Cotton + 11% polyester + 2%spandex

Size: 22-24

Features: Thickened;Breathable and sweat absorption

Arrival time: January 2025



A-White/gray



B-Blue



C-Orange

KSO-437 (UNISEX)

NEW

Material: 87% Cotton + 11%polyester + 2%spandex

Size: 24-26

Features: Breathable and anti-slip

Arrival time: January 2025



A-Blue



B- Purple



C- Pink

KSO-438 (UNISEX)

NEW

Material: 87% Cotton + 11% polyester + 2%spandex

Size: 24-26

Features: Breathable and anti-slip

Arrival time: January 2025



A-White/black



B-White



C-Green

KSO-439 (UNISEX)

NEW

Material: 87% cotton + 11%polyester + 2%spandex

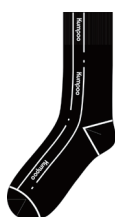
Size: 24-26

Features: Thickened;Breathable and anti-slip

Arrival time: January 2025



A-White



B-Black



C-Green

KSO-440 (UNISEX)

NEW

Material: 68% cotton + 30% polyester + 2% spandex

Size: 24-26

Features: Sweat absorption;soft

Arrival time: January 2025



A-White/orange



B-Blue



C-White/green

KSO-441 (UNISEX)

NEW

Material: 68% cotton + 30% polyester + 2% spandex

Size: 24-26

Features: Sweat absorption;soft and comfortable

Arrival time: January 2025



A-Purple



B-Green



C- Blue

KSO-442 (UNISEX)

NEW

Material: 68% cotton + 30% polyester + 2% spandex

Size: 24-26

Features: Sweat absorption;soft and comfortable

Arrival time: January 2025



A-Yellow



B- Blue



C- Purple

KSO-443 (UNISEX)

NEW

Material: 68% cotton + 30% polyester + 2% spandex

Size: 24-26

Features: Fashionable and sweat absorption

Arrival time: January 2025



A-White/purple



B- White/blue



C- White/pink

KSO-445 (UNISEX)

NEW

Material: 68% cotton + 30% polyester + 2% spandex

Size: 24-26

Features: Sweat absorption;soft and breathable

Arrival time: January 2025



A-Light blue



B- Light pink

KSO-401 (UNISEX)

Material: 69% cotton+ 27% polyester fiber + 4% spandex

Size: 24-26

Features: Anti-slip and shock-absorption, antiabrasion, toe and ankle protection, breathable and comfortable.

Arrival time: In stock



A-White



B-Green



C-Dark purple



D-Dark gray

KSO-402 (UNISEX)

Material: 69% cotton+ 27% polyester fiber + 4% spandex

Size: 24-26

Features: Anti-slip and shock-absorption, antiabrasion, toe and ankle protection, breathable and comfortable.

Arrival time: In stock



A-White/blue B-White/green C-White/purple

KSO-403 (UNISEX)

Material: 87% cotton+ 11% polyester fiber + 2% spandex

Size: 24-26

Features: Gradient anti-slip; anti-abrasion, ankles protection, breathable and comfortable.

Arrival time: In stock



A-Ombre pink B-Ombre blue

KSO-406 (UNISEX)

Material: 69% cotton+ 27% polyester fiber + 4% spandex

Size: 24-26

Features: Three - dimensional anti - slip, thickened, toe and ankle protection.

Arrival time: In stock



A- Blue B- Gray C-Green D-Khaki

KSO-407 (UNISEX)

Material: 69% cotton+ 27% polyester fiber + 4% spandex

Size: 24-26

Features: anti-abrasion, toe and ankle protection, anti-slip and shock-absorption.

Arrival time: In stock



A- Black B- White C- Blue violet

KSO-408 (UNISEX)

Material: 87% cotton+ 11% polyester fiber + 2% spandex

Size: 24-26

Features: Thickened and foot protection, comfortable, high elasticity and tear-resistant.

Arrival time: In stock



A- Green



B- Purple

KSO-409 (UNISEX)

Material: 69% cotton+ 27% polyester fiber + 4% spandex

Size: 24-26

Features: Breathable mesh on instep, anti-slip and shock-absorption.

Arrival time: In stock



A- Pink/green



B- Blue/green

KSO-410 (UNISEX)

Material: 69% cotton+ 27% polyester fiber + 4% spandex

Size: 24-26

Features: Anti-slip and shock-absorption, thickened and ankle protection.

Arrival time: In stock



A-White



B-Purple



C-Pink



D-Orange

KSO-420W (FEMALE)

Material: 87% cotton+ 11% polyester fiber + 2% spandex

Size: 24-26

Features: Leg shaping and fashionable.

Arrival time: In stock



A-Pink



B- Purple

KSO-421W (FEMALE)

Material: 69% cotton+ 27% polyester fiber + 4% spandex

Size: 22-24

Features: Anti-slip and shock-absorption, antiabrasion, comfortable and foot protection, sweat-absorption and breathable.

Arrival time: In stock



A-Pink



B- Purple

KSO-422W (FEMALE)

Material: 69% cotton+ 27% polyester fiber + 4% spandex

Size: 22-24

Features: Shock-absorption and anti-slip, comfortable and breathable, thickened and pressurized, high elasticity and wear-resistant.

Arrival time: In stock



A-Blue/pink

KSO-423W (FEMALE)

Material: 69% cotton+ 26% polyester fiber + 5% spandex

Size: 22-24

Features: Great elasticity and wear-resistance, breathable and comfortable, foot protection.

Arrival time: In stock



A-White/green



B- White/pink

KSO-430J (JUNIOR)

Material: 82% cotton+ 16% polyester fiber + 2% spandex

Size: 18-22

Features: Breathable and skin-friendly, elastic fitting, moisture-absorption.

Arrival time: In stock



A-White/green



B-Black/green



C-Red/white

WRISTBAND
KWT-408

NEW

Material: 80%cotton+18%polyester+2%spandex

Size: 8*8cm

Packing: 1 piece/bag

Arrival time: January 2025



A-Purple



B-Green



C-Gray



D-Black



E-White

WRISTBAND
KWT-401

Material: 74.8% Polyester +0.8% Spandex+ 24.4% Elastodiene fiber

Size: 8*10cm

Packing: 1piece/box

Arrival time: In stock



A-Blue/green



B-Green/purple



C-Pink

WRISTBAND
KWT-405

Material: 74% Cotton + 24% Polyester + 2% Spandex

Size: 8*8cm

Packing: 1piece/box

Arrival time: In stock



A-White/blue



B-White/pink

WRISTBAND
KWT-402J

Material: 74% Cotton + 24% Polyester + 2% Spandex

Size: 8*8cm

Packing: 1piece/box

Arrival time: In stock



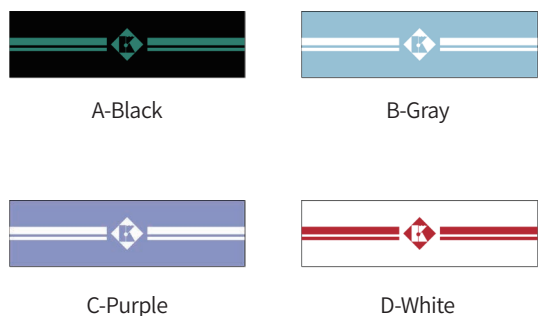
WRISTBAND
KWT-11

Material: 74% Cotton + 24% Polyester + 2% Spandex
 Size: 8*8cm
 Packing: 1 piece/bag
 Arrival time: In stock



WRISTBAND
KWT-31

Material: 74% Cotton + 24% Polyester + 2% Spandex
 Size: 8*10cm
 Packing: 1piece/box
 Arrival time: In stock



HEA DBAND
KHD-405

NEW

Material: 80% Cotton + 18% Polyester + 2% Spandex
 Size: 18*5cm
 Packing: 1piece/bag
 Arrival time: January 2025



HEA DBAND
KHD-401

Material: 74% Cotton + 24% Polyester + 2% Spandex
 Size: 18*5cm
 Packing: 1piece/bag
 Arrival time: In stock



A-Dark blue



B-Light blue



C- purple

HEADBAND
KHD-402

Material: 74% cotton+ 24% polyester fiber
+ 2% spandex

Size: 18*5cm

Packing: 1 piece/bag

Arrival time: In stock



A-White/red



B- Purple/orange

TOWEL
KT-403

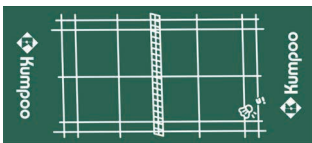


Material: 100% cotton

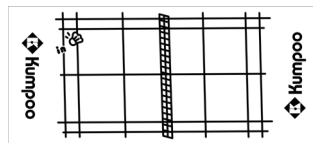
Size: 40*90cm

Packing: 1piece/bag

Arrival time: January 2025



A-Green/white



B- Black/white

TOWEL
KT-404



Material: 100% cotton

Size: 40*90cm

Packing: 1piece/bag

Arrival time: January 2025



A-Navy blue



B-Blue-cyan



C-Khaki

TOWEL
KT-401

Material: 100% ultra-soft fiber

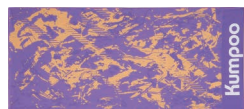
Size: 40*90cm

Packing: 1piece/bag

Arrival time: In stock



A-Dark purple



B- Light purple



C-Light blue

TOWEL
KT-402

Material: 100% polyester fiber

Size: 39*90cm

Packing: 1 piece/bag

Arrival time: In stock



A-Light blue/navy blue



B-Black/pink

TOWEL
KT-403

Material: 100% cotton

Size: 40*90cm

Packing: 1piece/bag

Arrival time: In stock



A-Blue



B-Orange

TOWEL
KT-404

Material: 100% cotton

Size: 40*90cm

Packing: 1piece/bag

Arrival time: In stock



A- White



B-Black



C-Gray blue



D-Navy blue

BASEBALL CAP
KCP-01



Material: 100% polyester

Size: 55-58

Functions: Light and comfortable;Breathable

Arrival time: January 2025



A-White



B-Black



C-Gray blue



D-Navy blue

HOLLOW HAT KCP-02

NEW

Material: 100% polyester

Size: 55-58

Functions: top opening, sweat absorption

Arrival time: January 2025



Black

ARM SUPPORT KDZ-131

Material: 82% Nylon+ 18% Spandex

Size: M、L

Packing: 1piece/box

Arrival time: In stock



Black

ELBOW SUPPORT KDZ-330

Material: 15% Lycra + 60% Elastodiene + 25% Nylon

Size: M、L

Packing: 1piece/box

Arrival time: In stock



Black

TOWEL KDZ-380

Material: 15% Lycra + 60% Elastodiene
+ 25% Nylon + Spring bar

Size: One size

Packing: 1piece/box

Arrival time: In stock



Black

KNEE SUPPORT KDZ-381

Material: 10% Spandex yarn + 40% Bamboo fiber + 25% Cotton + 25% Spandex

Size: M、L

Packing: 1piece/box

Arrival time: In stock



Black

KNEE SUPPORT KDZ-382

Material: 25% Polyester + 60% Elastodiene + 15% Lycra

Size: One size

Packing: 1piece/box

Arrival time: In stock



Black

CALF SUPPORT KDS-285

Material: 82% Nylon + 18% Spandex

Size: M、L

Packing: 1piece/box

Arrival time: In stock



Gray

INSOLE KI-01A

Material: EVA

Size: 35-45

Functions: Breathable, anti-slip, massage, deodorant

Arrival time: In stock



Black

INSOLE KI-06

Material: Mesh + EVA

Size: 35-45

Functions: Wear resistant, breathable and anti-slip

Arrival time: In stock



A-White



B-Black



C-Blue



D-Pink

MASSAGE GUN KFG-E30

Material:	ABS
Size:	128*78*38mm
Motor type:	Brushless motor
Battery capacity:	800mAh
Power:	25W
Functions:	Six gears adjustable
Accessories:	Packing box + 4 massage heads + Type-C charging cable + Manual



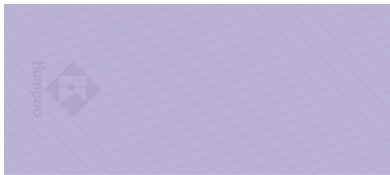
A-Yellow



B-White

SHUTTLECOCK STEAMER KSS-11

Material:	PC+ABS
Size:	120*78*78mm
Spray quantity:	140-155ML/h
Battery capacity:	1800mAh
Working power:	DC5V=3W
Tank capacity:	150ml
Three-gear timing:	First gear 45s/ Second gear 75s/ Third gear steam steady on
Interface type:	type-C
Instructions:	Battery/Plug-in



Purple+Light gray

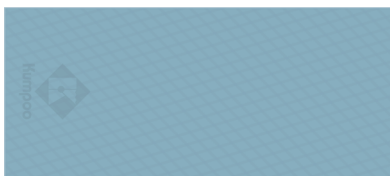
YOGA MAT
KYG-10



Material: TPE environmental protection material

Size: 183*80*0.6cm

Arrival time: January 2025



Blue+Navy blue

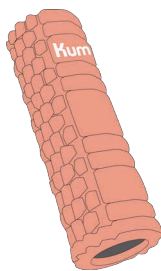
YOGA MAT
KYG-10



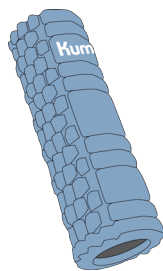
Material: TPE environmental protection material

Size: 183*80*0.8cm

Arrival time: January 2025



A-Light orange



B-Blue

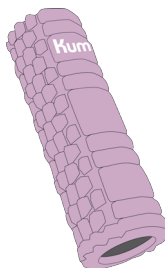
FOAM ROLLER
KYG-11



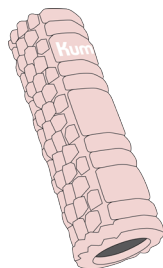
Material: EVA+PP

Size: 30*10cm

Arrival time: January 2025



A-Light purple



B-Pink

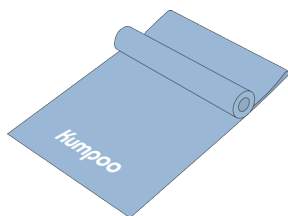
FOAM ROLLER
KYG-12



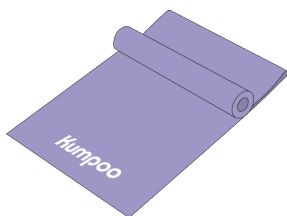
Material: EVA+PP

Size: 33*14cm

Arrival time: January 2025



A-Blue



B-Purple

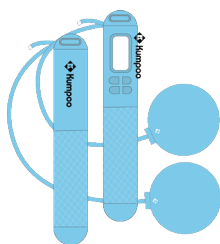
LATEX ELASTIC BAND
KYG-10

NEW

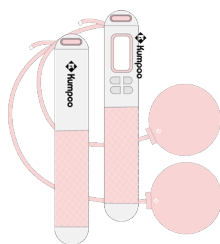
Material: Environmental protection material

Size: 1500*150*0.35mm

Arrival time: January 2025



A-Blue



B-Pink/white

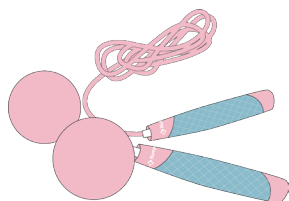
SKIPPING ROPE
KSG-10

NEW

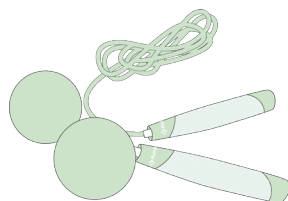
Material: silicone handle+PVC coated steel wire

Size: 4.5mm*3m

Arrival time: January 2025



A-Pink/blue



B-Green

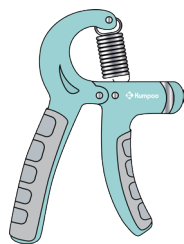
SKIPPING ROPE
KSG-11

NEW

Material: PP+ silicone handle+PVC coated steel wire

Size: 4.5mm*3m

Arrival time: January 2025



A-Blue



B-Green

PINCH METER
KWG-01

NEW

Material: pp+TPR rubber

Specification: glue-covered electronic counter

Arrival time: January 2025



A-Gray



B-Black

PINCH METER
KWG-02

Material: pp+TPR rubber

Specification: Electronic counter

Arrival time: In stock



Green

REACTION BALL
KLG-02

NEW

Material: Environmental protection material

Size: 56mm

Arrival time: January 2025



A-Pink



B-Blue



C-Orange

REACTION BALL
KLG-03

NEW

Material: Environmental protection material

Size: 68mm

Arrival time: January 2025



A-Blue



B-Black



C-Pink



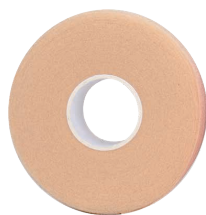
D-Green

HEADBAND
KNG-20

Material: Polyester + Latex yarn

Size: 1.2*25cm

Arrival time: In stock



A-Creamy white



B-Red

CUSHION WRAP KCF-701

Material: Polyurethane

weight: 7cm

Length: 27m

Functions: To adjust the balance point of the racket as well as the thickness and comfort feeling of handle

Usage: Remove handle grip and then wrap the handle with the cushion wrap



GRIP POWDER KGP-001

Material: Magnesium carbonate

Net weight: 20g

Functions: It will absorb perspiration of skin and prevent skidding.

Usage: Pour the grip power on the racket handle or hands.



TAKE THE CHALLENGE

